



LET'S TALK KENT!

Corporate Services | 1

Board of Directors and
Committees

Project Coordinator

Board Meetings

Planning Services | 3

Renovations

Variances

Subdivisions

Rezoning

Public Safety | 5

Positive Ticketing

Buy-Local Campaign | 6

Continuity

Buying Local During
the Holidays

Solid Waste | 7

Bulky Waste Instructions

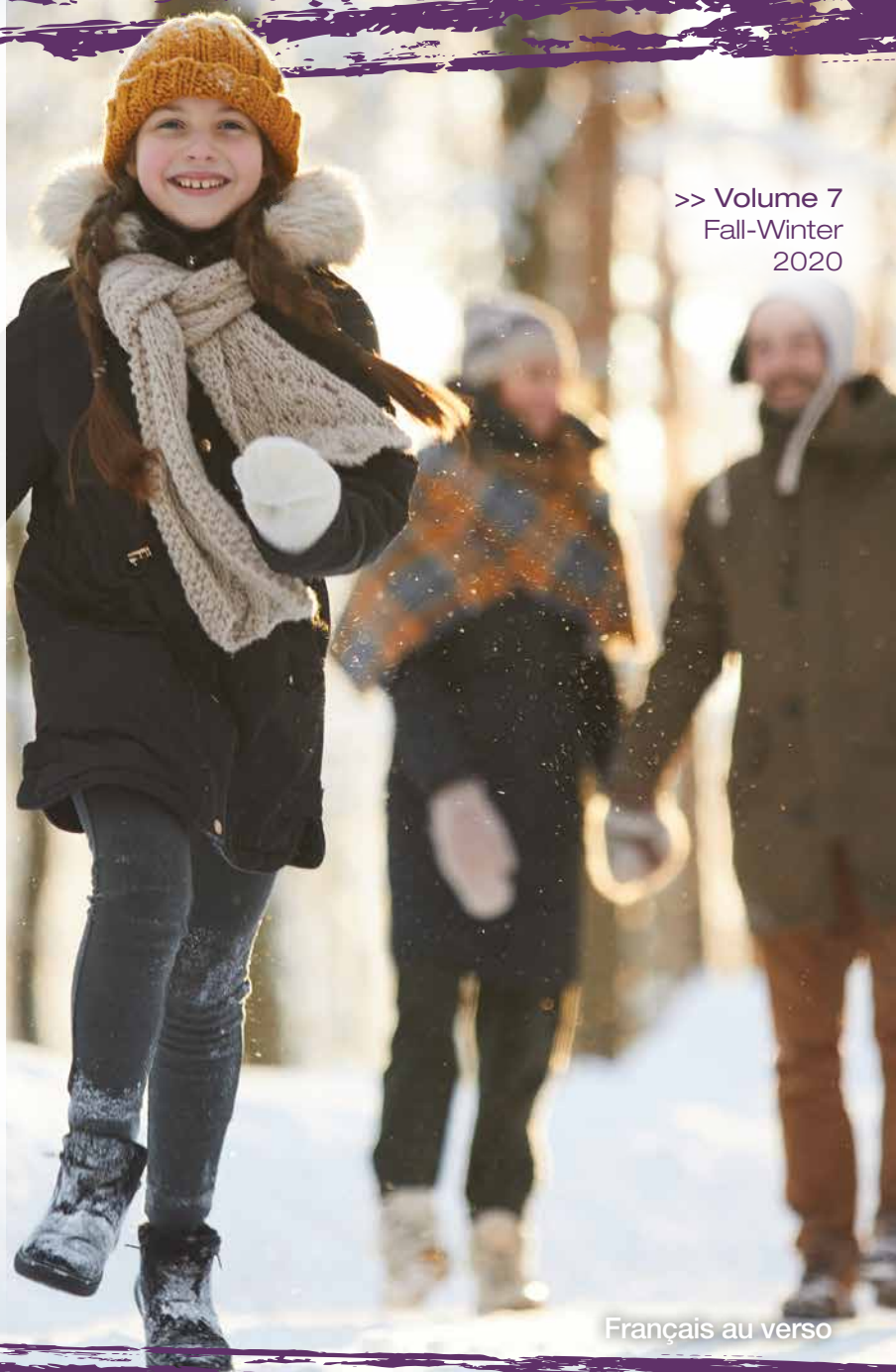
Fall Collection Schedule

Practical Tips

Mobile Eco-Depots

2021 Collection Schedule

>> Volume 7
Fall-Winter
2020



Français au verso

The Board of Directors (the “Board”) and staff of the Kent Regional Service Commission (KRSC) are pleased to present this newsletter outlining the Commission’s services and activities for fall and winter 2020.

The KRSC is working hard to ensure that the region continues to develop and that the services it offers meet the expectations of its citizens.

Board of Directors and Committees: 2019-2020

The arrival of COVID-19 in Canada forced the postponement of the municipal elections scheduled for May 2020. The KRSC Board and the members elected to our various committees therefore had their terms renewed for an additional year.

During this period of uncertainty, it was reassuring for the region to know that the Commission’s work would continue to get done. The stability was also comforting because it shows that the Board is clearly dedicated to the region’s well-being. The entire KRSC staff is extremely grateful to these individuals for readily agreeing to stay on for another year.



The Board of Directors at our Annual General Meeting held on May 16, 2019

Pierrette Robichaud, Chair, Mayor of the Village of Rogersville | **Claude LeBlanc**, Vice-Chair, LSD of Wellington | **Tina Beers**, LSD of Harcourt | **Docile Cormier**, LSD of Carleton | **Eugène Cormier**, Deputy Mayor of the Village of Saint-Antoine | **Jean-Charles Daigle**, LSD of Pointe-Sapin | **Roger Doiron**, Mayor of the Town of Richibucto | **Danielle Dugas**, Mayor of the Village of Saint-Louis de Kent | **Gisèle Fontaine**, LSD of Saint-Louis | **Roland Fougère**, Mayor of the Town of Bouctouche | **Jean Hébert**, Mayor of the Rural Community of Cocagne | **Pierre LeBlanc**, LSD of Grande-Digue | **Paul Lirette**, LSD of Saint-Charles | **Maurice Maillet**, LSD of Sainte-Marie | **Kris Morey**, LSD of Weldford | **Roger Richard**, LSD of Acadieville | **Randy Warman**, Mayor of the Village of Rexton

Absent: **Ricky Gautreau**, Mayor of the Village of Saint-Antoine | **Bruno Doucette**, substitute member, LSD of Collette | **Jacques Cormier**, substitute member, LSD of Saint-Paul

Project Coordinator

Congratulations to **Isabelle Godin**, Project Coordinator, on obtaining her Master's degree in Public Administration from the Université de Moncton last April. Isabelle completed the degree part-time in four years while working full-time, which is quite the feat! We will be putting Isabelle's newly acquired skills to good use to improve our service offering and make our organization more efficient. The KRSC is fortunate to have Isabelle on staff and wishes her every success in the years to come.



Board Meetings

Although the format has changed to accommodate Public Health recommendations, KRSC Board meetings are still open to the public.

All are welcome to attend the Board's upcoming fall meetings, which are normally held at **6:30 p.m. on the third Thursday of the month**. Visit the "Public Notices" section on our website to find out how the meeting will unfold and how you can attend.

Simultaneous interpretation is available.



Thinking of Renovating?

Several types of renovations require a building permit in order to be carried out legally and safely. KRSC staff can help you determine whether or not your project requires one. The list below shows some of the projects for which a permit is needed:

- Construction of residential, commercial or accessory buildings
- Renovations involving structural changes to a building
- Decks, ramps and stairs
- Fences
- Swimming pool additions
- Electrical work (e.g., replacing an electrical panel)

How to Obtain a Variance

The KRSC, through the powers granted to it under provincial legislation, appoints a Planning Review Adjustment Committee (PRAC) to review applications that normally require only minor adjustments.

Public meetings of the committee are held monthly at **25 Cartier Boulevard in Richibucto at 6:30 p.m. on the third Monday of each month.**

To have your name added to the agenda, you must make the request to one of our officers/inspectors.

Subdivisions – Division and Consolidation of Land

The term *subdivision* is often perceived as being associated with large developments that include lots, streets, service easements, and so on, but it also includes parcels of land, consolidations and property line corrections. Should you wish to request a change to a subdivision, we strongly recommend that you start by consulting with a development officer and hiring a licensed surveyor to prepare a plan.

The **REZONING** Process

Zoning is a process that ensures oversight of municipal and community land **and a tool that allows for the orderly development of land.**

Owners and developers who wish to have the zoning of a specific property changed can apply for a zoning by-law amendment or request a rezoning. The process can take **from three to six months** to complete and even longer if key information or documents required to process the application are missing.

The **process is public**, and transparency and access to information are essential. The project details and the owner's or developer's identity are therefore made available to the community during the process. Projects may encounter opposition, and members of the public can voice their concerns to the Municipal Council or the KRSC in writing or in person at public meetings organized to study the application.



Documents required for rezoning requests

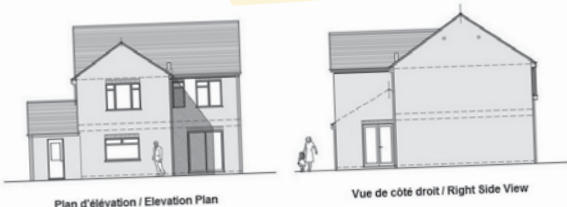
To apply for rezoning, a detailed site plan drawn to scale and including the following is required:

- ☑ area, lot dimensions, PID(s) (parcel identification number) and civic address (if specified)
- ☑ layout of the proposed building(s) and accessory buildings
- ☑ drainage of surface water on the property (may be required in some cases)
- ☑ an illustration of the building as seen from the street (elevation plan or drawing)
- ☑ floor plans
- ☑ exterior signs if applicable
- ☑ proposed exterior materials (may be required in some cases)

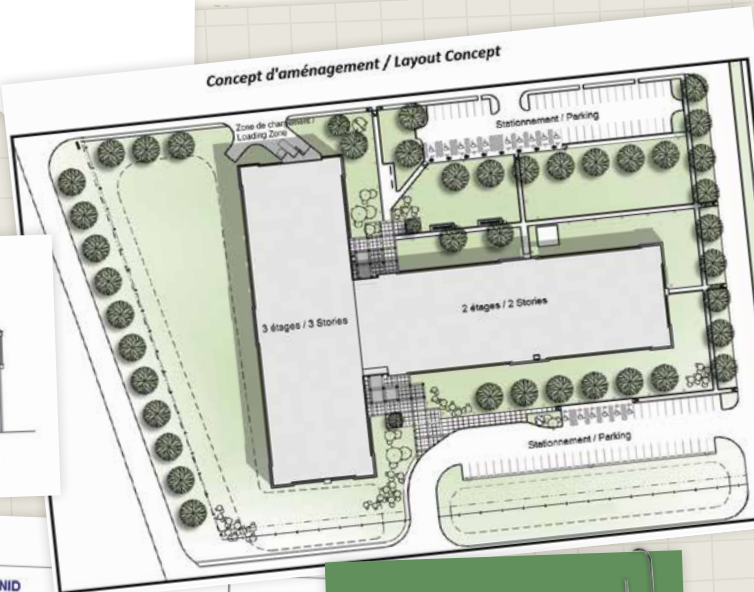
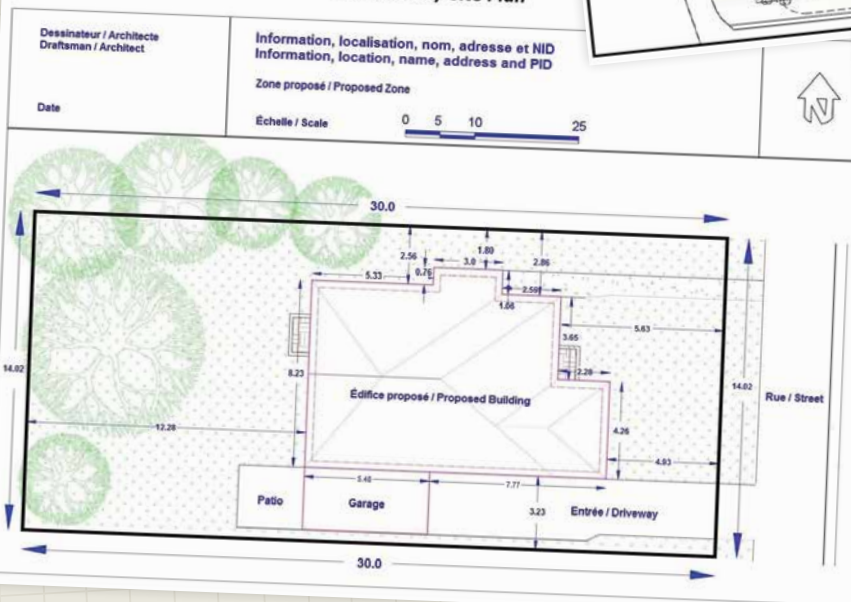
The plan must be drawn on an adequate scale by an Auto CAD software or other similar program to illustrate the project's concept to the Council, the Planning Committee and residents.

The format of the document must be electronic/digital (PDF or JPEG format) for distribution, reproduction and presentation purposes.

Plan Examples



Plan de site / Site Plan



Submitting all required information from the outset will considerably increase the chances of your project being approved and decrease the possibility of delays.

POSITIVE TICKETING: It's Not Too Late!

Kent region police officers resumed the distribution of "positive tickets" to youths showing good behaviour in July. The tickets can be redeemed for items at participating local businesses. All recipients get their names entered into a grand prize draw in the fall.

Children can still get tickets for a chance to win a gift certificate redeemable at Mike's Bike Shop for a new bike and helmet.

What exactly is "good behaviour"?



Wearing a helmet
when cycling



Using pedestrian
crossings



Wearing a seat belt
in the car



Performing acts of
kindness (e.g., *holding
the door for someone*)



Demonstrating pride
in the community
(e.g., *picking up litter*)



And much
more
...



J'achète
ici d'abord
#dansKentdabord

I buy
local first
#inKentfirst



Throughout summer 2020, a campaign encouraging local buying and tourism in the Kent region gained momentum on social media, on the airwaves and at your favourite local businesses.

The “**I Buy Local First | #InKentfirst**” campaign would not have been as successful without the overwhelming support of Kent residents and business owners. Your enthusiasm for the initiative and your participation in our many contests were greatly appreciated.

Although summer is now behind us, you haven't seen the last of the slogan and logo. The campaign will continue with other great opportunities.

- **Want to buy this t-shirt?** Contact the KRSC to place your order!



- Business owners, it's not too late to register!
Click on www.krsc.ca/kent-first/ to participate in upcoming promotions.



Buy local during the holidays

It's never too early to start planning holiday shopping for yourself, loved ones or family. This year, challenge yourself to prioritize local businesses for all your gift and decoration needs. **Buying local benefits everyone!**

BULKY WASTE

(Large Items)

Special collection for large items,
not for large quantities of waste



SOLID WASTE

Reminder of the rules

Follow these simple rules to help keep our garbage collectors safe and able to work efficiently:

☐ **No more than 15 “items”**
per home per pick-up
(for a total of 45 a year)

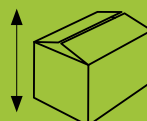
☐ No black or opaque bags

☐ No waste left in a trailer or truck bed

☐ No loose waste (small objects). Use boxes or
clear bags weighing no more than 50 lb (23 kg).

☐ Only small quantities of
construction or demolition
(C&D) waste will be accepted.
Organize it in bundles measuring
no more than 4' x 2' x 2'
(1.2 x 0.6 x 0.6 m). **Limit of
five bundles per household.**

Bundle, bag and box



4' x 2' x 2'
maximum



Visit our website for more details on what will and will not be picked up.

Metal items

These materials are accepted during bulky waste
collection but are collected by a different truck
for recycling instead of disposal at the landfill.

Put your metal items out **before 4 a.m.** on
collection day. The garbage collectors will note
your address, and the metal truck will come
by within the next few days, depending on
the amount of metal to be picked up.



Special Collection

SCHEDULE 2020

Place your bulky waste by the road **before 4 a.m.** on a date indicated below:

Collector	Community	Fall
Fero Waste and Recycling Inc. 203 Desbrisay Ave. Moncton NB 1 506 855-3376	Grande-Digue	October 12
	Cocagne (except Murray Road and Route 535 west of number 644)	October 13
	Haut-Saint-Antoine, Pelerin, Saint-Antoine Sud (including Murray Road and Route 535 west of number 644), Saint-Damien, Notre-Dame, Gladeside and Dundas	October 14
	Dixon Point, Saint-Thomas-de-Kent, Bouctouche Sud, Saint-Grégoire, Saint-Joseph-de-Kent, McKees Mills, Saint-Antoine Nord and Renauds Mills	October 15
	Sainte-Marie-de-Kent and Balla Philip	October 26
	Saint-Paul, Clairville, Hébert, Birch Ridge, Coal Branch and Adamsville	October 27
	Smith's Corner, Cails Mills, Browns Yard, Fords Mills, Beersville, Pine Ridge, Saint-Norbert, Ford Bank and West Branch	October 28
	Richibouctou-Village, Jardineville and Indian Island LSD (not including the First Nation)	October 19
	Galloway and municipalities of Rexton and Richibucto	October 20
	Bass River, Targetville, Main River, Upper Rexton, Childs Creek, Mundleville and East Branch	October 21
	Sainte-Anne-de-Kent, Saint-Édouard-de-Kent, Bouctouche Bay, McIntosh Hill, Bouctouche First Nation, Bouctouche Cove, Saint-Maurice and South Branch	October 22
	Saint-Louis LSD, Lower Saint-Charles and Saint-Charles Road South area east of Highway 11	October 19
	Aldouane and municipality of Saint-Louis de Kent	October 20
	Saint-Ignace and Saint-Charles (including Gray Road, Saint-Charles Station, Saint-Charles Road South west of Highway 11 and Chemin de l'Église)	October 21
	Pointe-Sapin, Laketon, Kouchibouguac, Canisto and Portage Saint-Louis	October 22
McAction Enterprise Inc. 4112 Route 515 Sainte-Marie-de-Kent (NB) 1 506-743-3275	Collette, Murray Settlement, Rogersville-Est, Acadieville, Acadie Siding, Noinville, Kent Junction and Harcourt	October 12
	Rogersville-Ouest, Rosaireville and municipality of Rogersville	October 20
Call your local government for any questions related to collection	Municipality of Bouctouche	October 13
	Municipality of Saint-Antoine	October 28
	Indian Island First Nation	October 7 to 9

Download our free mobile app!

Recieve reminders of weekly collections and special runs, such as bulky waste pick-up and the Mobile Eco-Depot visit.

ECO-DEPOTS are Back!

The **Kent Regional Service Commission** is proud to announce the return of Eco-Depots. Offered in partnership with **Southeast Eco360**, this **FREE** service allows you to dispose of bulky, hazardous and other types of waste at a location near you.

✓ BRING US THE FOLLOWING ITEMS:

Maximum quantity equivalent to a half-ton truck or utility trailer load.

Residents are asked to sort their load by type of material to facilitate unloading.

- Appliances and furniture
- Construction and demolition waste **(make sure it's easy and safe to transport)**
- Household hazardous waste
- Small motorized tools **(must be emptied of oil and gasoline)**
- Wood pallets **(limit of five per resident)**
- Marine debris **(limit of five traps and ten buoys per resident)**
- Glass **(the glass gathered during these collections will be recycled)**
- Tires **(limit of eight per resident)**
- Ash
- And more!

✗ THE FOLLOWING ITEMS ARE NOT ACCEPTED:

- Auto parts **(except tires)**
- Regular waste eligible for roadside pick-up **(blue, green and clear bags)**
- Bulk waste not sorted by type of material
- Commercial waste



ECO-DEPOT DATES AND LOCATIONS

Saturday, September 19, 2020 – Bouctouche (9 a.m. to 4 p.m.)
J.K. Irving Centre, parking lot B, 30 Evangeline Street

Saturday, October 17, 2020 – Rogersville (9 a.m. to 4 p.m.)
Arena, 16 Des Ormes Street

Saturday, November 7, 2020 – Elsipogtog (9 a.m. to 4 p.m.)
Economic Development Office, 29 Big Cove Road

Saturday, February 13, 2020 – St-Louis-de-Kent (9 a.m. to 4 p.m.)
Municipal Building, 10511 Principale Street

Saturday, March 20, 2020 – St-Antoine (9 a.m. to 4 p.m.)
Municipal Building, 4556 Principale Street

COVID-RELATED MEASURES

To limit the spread of COVID-19, please be patient during your visits to mobile Eco-Depots and stay in your vehicle.

Eco360 staff will be happy to remove your items from your vehicle for you.

For more information on the Eco-Depot service, visit the Commission's website or contact us.



Practical TIPS

Your bags in a bin or box

Be strategic about how you put your bags in your boxes and bins so that nothing gets left behind.

Keep bags of the same colour together, as shown in the pictures, so that the garbage collectors don't miss any.



Make sure your bags and/or bins are visible.

AVOID THIS



Some bags may not be seen and could be left behind.



CAUTION

Make sure your garbage is in properly sealed and tied bags! We won't pick up bulk waste that's not bagged, except for cardboard bundles.



Follow these tips to make sure your bags are picked up:

- Put your bags out before 4 a.m.
- Place them to the left of your driveway or yard (imagine you're facing your house) and make sure they're visible from the road.
- Bags and bins must be less than 10 feet (3 m) from the road.
- Clear away **branches, ice and snow** and keep your garbage away from **rodents, animals and insects**, so that workers have safe and easy access.



LESS THAN 10 FEET
(3 METRES)

COLLECTION SCHEDULE 2021

As is the custom every year, the KRSC will mail you a copy of the 2021 collection schedule by no later than the first week of December.

If you don't receive one, we always leave extra copies at your local municipal office, so you can get one there.



Collection Calendar 2021

The answer is clear!

Collection of RECYCLABLES (Blue bags)

Collection of GARBAGE (Clear bags)

ORGANICS (Green bags are collected EVERY WEEK)

Please curb your waste before 4 A.M. on your collection day.

Statutory holidays - Only the holidays shown in red will affect waste collection. If your collection day falls on a red square, the collection will take place on the following Friday.

Storms - If the collection is cancelled due to stormy weather, it will be announced on radio, or Facebook page, sent through our mobile app. The collection will take place on the following Friday.

DECEMBER

D	L	M	T	F	S
				1	2
3	4	5	6	7	8
9	10	11	12	13	14
15	16	17	18	19	20
21	22	23	24	25	26
27	28	29	30	31	

JANUARY **FEBRUARY** **MARCH** **APRIL**

MAY **JUNE** **JULY** **AUGUST**

SEPTEMBER **OCTOBER** **NOVEMBER** **DECEMBER**

* Please note that these guidelines ONLY APPLY to the municipalities of Bouctouche and Saint-Amand as well as to the First Nations of Elsipogtog and Ojibway Island. Residents of these four communities may contact their local administration for any matters regarding waste collection.

Commission de services régionaux de Kent Kent Regional Service Commission

Download the application **KENT SERVICES**

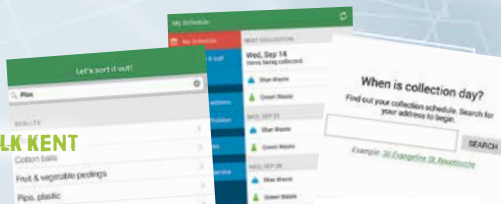
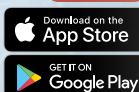
1 506 743-1490 toll free 1 855 588-1125

f @KentRSC WWW.KRSC.CA



Download our FREE app KENT SERVICES

- Garbage collection schedule
- Sorting guide
- Collection interruption or change alerts
- Special event alerts (bulky waste collection, Eco-Depots, Public Safety Days, etc.)
- Reminders about 72-hour preparedness
- Emergency measures alerts (detours, warming centre openings, etc.)



Visit our website at WWW.KRSC.CA

You'll find a full list of KSRC programs, plus various tools and resources.

Keep in touch...

Bouctouche 506-743-1490
Toll-free 1-855-588-1125

104 Irving Boulevard, Unit 1
Bouctouche, NB E4S 3L5

Richibucto 506-523-1820
25 Cartier Boulevard, Unit 145
Richibucto, NB E4W 3W7



1 855 588-1125