

LET'S TALK KENT!

Corporate Services | 1

Board of Directors
Executive Director
Board Meetings

Planning Services | 3

Rezoning Process

Public Safety | 5

Public Safety Day

Recreation | Tourism | 6

Tourism in the Kent Region

Solid Waste | 7

Recycling of Electronics
Mobile Eco-Depot
Bulky Waste
Fall Collection Schedule
Practical Tips

>> Volume 5
Fall-Winter
2019



Français au verso

The Board of Directors (the 'Board') of the Kent Regional Service Commission (KRSC) is pleased to provide this newsletter outlining its services and activities for fall and winter 2019.

The Board is working hard to ensure that the region continues to develop and that the services it offers meet the expectations of its citizens.

2019-2020 Board of Directors

The KRSC Board is proud to announce the arrival of two new members. **Gisèle Fontaine**, from the Local Service District (LSD) of Saint-Louis, was well known to the Board, having already played an active role on it as a substitute member. **Jean-Charles Daigle**, from the LSD of Pointe-Sapin, is the other new member. The two were officially elected to the Board at the 2019 AGM on May 16.

Chair and Vice-Chair

A change in Board leadership has also taken place. Elections are held every year to determine which Board members will act as KRSC Chair and Vice-Chair. At the 2019 AGM, Pierrette Robichaud, Mayor of the Village of Rogersville, became our very first woman Chair. Claude Leblanc from the LSD of Wellington is now Vice-Chair.

Congratulations to all in their new roles and thank you for your dedication to the greater Kent region.



The Board of Directors at our Annual General Meeting held on May 16, 2019

Pierrette Robichaud, Chair, Mayor of the Village of Rogersville | **Claude LeBlanc**, Vice-Chair, LSD of Wellington | **Tina Beers**, LSD of Harcourt | **Docile Cormier**, LSD of Carleton | **Eugène Cormier**, Deputy Mayor of the Village of Saint-Antoine | **Jean-Charles Daigle**, LSD of Pointe-Sapin | **Roger Doiron**, Mayor of the Town of Richibucto | **Danielle Dugas**, Mayor of the Village of Saint-Louis de Kent | **Gisèle Fontaine**, LSD of Saint-Louis | **Roland Fougère**, Mayor of the Town of Bouctouche | **Jean Hébert**, Mayor of the Rural Community of Cocagne | **Pierre LeBlanc**, LSD of Grande-Digue | **Paul Lirette**, LSD of Saint-Charles | **Maurice Maillet**, LSD of Sainte-Marie | **Kris Morey**, LSD of Weldford | **Roger Richard**, LSD of Acadieville | **Randy Warman**, Mayor of the Village of Rexton

Absent: **Ricky Gautreau**, Mayor of the Village of Saint-Antoine | **Bruno Doucette**, substitute member, LSD of Collette | **Jacques Cormier**, substitute member, LSD of Saint-Paul

Executive Director

The Board wishes to recognize the excellence of one of its employees.

Paul Lang has been KRSC Executive Director since the organization's inception in 2013 and has worked unceasingly to promote our region provincially through his leadership, innovative ideas and enthusiasm.

This spring, Mr. Lang achieved Level 3 Advanced Professional Certification in Local Government Administration from the Association of Municipal Administrators of New Brunswick (AMANB). The certification is a testament to Mr. Lang's skills, work experience and personal interest in municipal administration.

The KRSC Board and staff are proud to work with such a dedicated and knowledgeable individual as Paul. Congratulations on achieving this well-earned qualification!



Board Meeting

KRSC Board meetings are open to the public.

The Board invites residents to its upcoming meetings on **September 19, October 17** and **November 14, 2019**. The meetings are held at the KRSC office in Richibucto (25 Cartier Boulevard, Suite 145) and **start at 6:30 p.m.** Simultaneous interpretation services are provided.



REZONING Process

Zoning is a process that ensures oversight of the uses of municipal and community land, and a tool that allows for the orderly development of land.

Owners and developers who wish to have the zoning of a specific property changed can apply for a zoning by-law amendment or request a rezoning. The process can take from three to six months to complete and even longer if key information or documents required to process the application are missing.

The process is public, and transparency and access to information are essential. The project details and the owner's or developer's identity are therefore made available to the community during the process. Projects may encounter opposition, and members of the public can voice their concerns to the Municipal Council or the KRSC in writing or in person at public meetings organized to study the application.

Our planners can discuss your project with you and help you gather the information needed to complete your application. The zoning by-law amendment application form can be found at www.krsc.ca and printed copies are available at our Bouctouche and Richibucto offices.

**For more information about the process,
go to our website or contact one of our planners.**

Documents required for rezoning requests

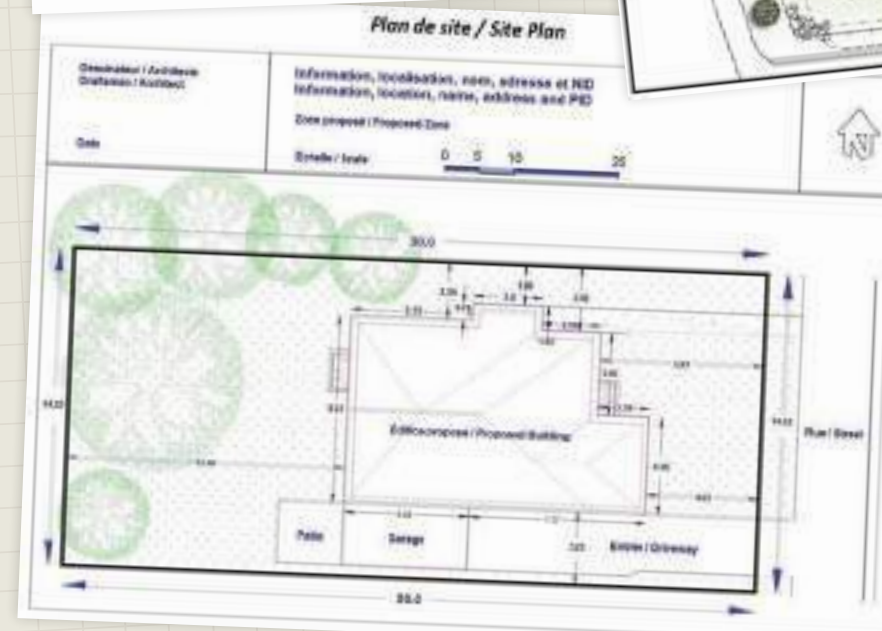
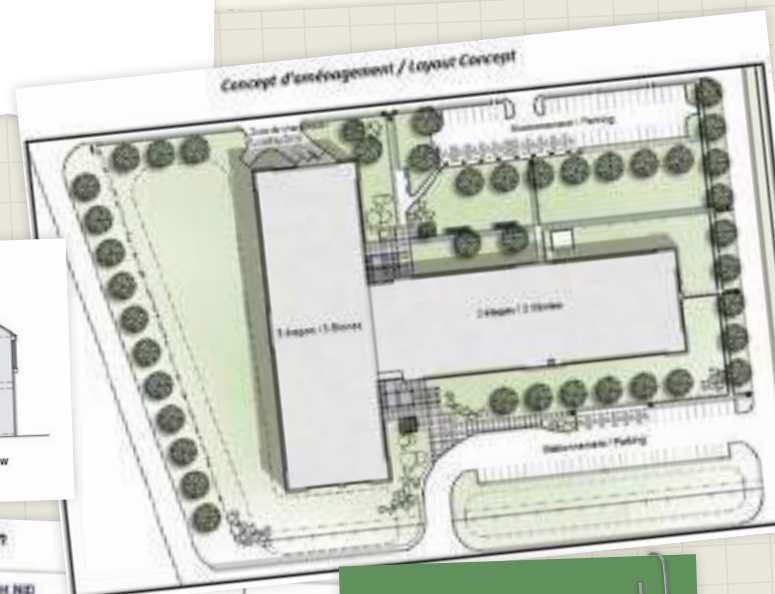
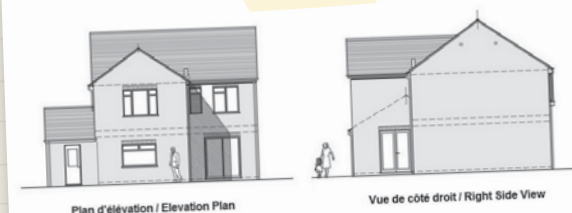
To apply for rezoning, a detailed site plan drawn to scale and including the following is required:

- ☑ area, lot dimensions, PID(s) and civic address (if specified)
- ☑ layout of the proposed building(s) and accessory buildings
- ☑ drainage of surface water on the property (may be required in some cases)
- ☑ an illustration of the building as seen from the street (elevation plan or drawing)
- ☑ floor plans
- ☑ exterior signs if applicable
- ☑ proposed exterior materials (may be required in some cases)

The plan must be drawn on an adequate scale by an Auto CAD software or other similar program to illustrate the project's concept to the Council, the Planning Committee and residents.

The format of the document must be electronic/digital for distribution, reproduction and presentation purposes (PDF or JPEG format).

Plan Examples



Submitting all required information from the outset will considerably increase the chances of your project being approved and decrease the possibility of delays.

Public SAFETY

PUBLIC SAFETY DAY:

Saint-Antoine to host the 6th edition this fall!

The Village of Saint-Louis-de-Kent hosted the 5th Public Safety Day on May 25, with roughly 200 participants taking part in the many awareness-raising activities.

The 6th edition will be held in the Village of Saint-Antoine. Join us on **Saturday, October 5, from 10 a.m. to 1 p.m.** for a full slate of informative activities for the entire family. There is no cost to attend.

- **Emergency vehicle demonstrations**
- **Information booths**
- **Firefighter demonstrations**
- **Inflatable games**
- **Free BBQ**

Plus a host of door prizes



Bring your friends and family!

📍 Saint-Antoine 📅 October 5

RECREATION & TOURISM

In June, the KRSC ended its agreement with New Brunswick Cultural Coast, a tourism association representing the Kent and Southeastern New Brunswick regions.

Recognizing the heavy workload that tourism places on volunteers and the sheer size of the region they have to cover, the KRSC decided to focus on the needs of the Kent region. A steering committee made up of five regional operators and two KRSC Board members has been struck, tasked with recommending the direction that tourism should take in the Kent region. To meet the tourism sector's needs, a forum is being planned for fall 2020.

What's the connection between recreation and tourism? It's quite simple: both go hand in hand. A thriving recreational sector benefits tourism through community activities and festivals. Tourists travel in leisure mode and both sectors complement each other; a lack of growth in one will drag down the other.



RECYCLE MY ELECTRONICS



The future is in your hands. Don't let it go to waste.™

WHAT CAN BE RECYCLED?



Display
Devices



Non-Cellular
Telephones



Home Audio/
Video Systems



Desktop
Computers



Desktop
Printers



Personal/Portable
Audio/Video
Systems



Computer
Peripherals



Cellular
Devices



Portable
Computers



Home Theatre
In-A-Box (HTB)
Systems



Vehicle Audio/
Video Systems
(aftermarket)

To find out what and where to recycle,
visit recycleMYelectronics.ca/NB

RECYCLE YEAR-ROUND AT THESE LOCATIONS

Caissie's Recycling

41 Centrale Street, Rogersville
New Brunswick E4Y 2G6

Recyclage Kent Recycling Inc.

10296 Route 134, Saint-Louis de Kent
New Brunswick E4X 1G5

Cocagne Variety Ltd

4702 Route 134, Cocagne
New Brunswick E4R 2Z5

Saint Antoine Bottle Exchange

4590 Principale Street, Saint-Antoine
New Brunswick E4V 3H3



888-322-8473
www.recyclenb.com

This program is approved by Recycle NB.

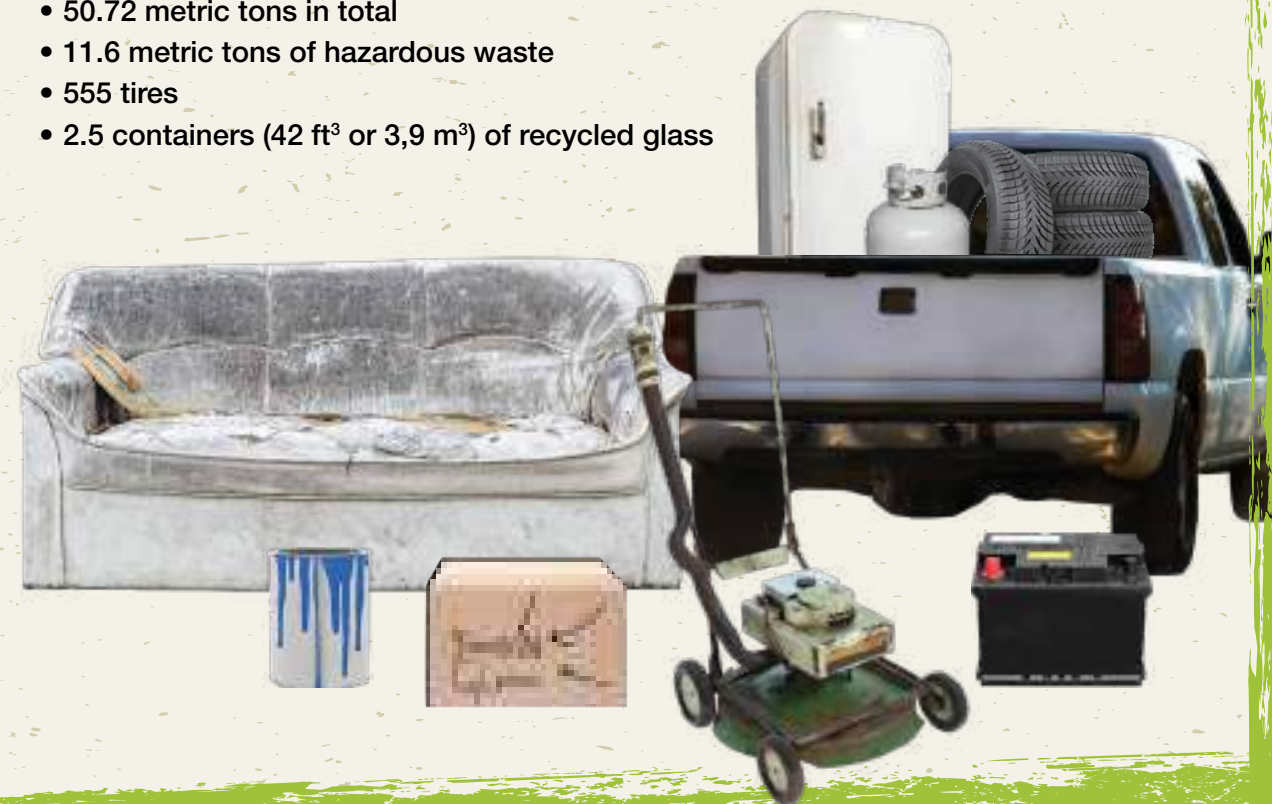
MOBILE ECO-DEPOT

1021 THANK YOUs!

The KRSC joins its Southeast Eco360 partners in thanking you for your participation in this year's first events. The new Mobile Eco-Depot service was a great success because of you!

The figures from the first four events are telling:

- 1,021 cars
- 50.72 metric tons in total
- 11.6 metric tons of hazardous waste
- 555 tires
- 2.5 containers (42 ft³ or 3,9 m³) of recycled glass



We encourage you to take part in the last events of 2019 and to circle the first dates of 2020 on your calendar. **Contact us or visit our website for a list of accepted items.**

Saturday, Sept. 14 2019 – Bouctouche (9 a.m. to 4 p.m.)
Parking lot B, J.K. Irving Centre: 30 Évangéline Street

Saturday, Nov. 30 2019 – Saint-Antoine (9 a.m. to 4 p.m.)
Municipal building: 4556 Principale Street

*** Wed. 4 and Thu. 5 of December – Shediac (noon to 8 p.m.)**
Festival arena parking lot, 84 Festival Street

Saturday, Feb. 8 2020 – Saint-Louis-de-Kent (9 a.m. to 4 p.m.)
Municipal building: 10511 Principale Street

Saturday, March 21 2020 – Rogersville (9 a.m. to 4 p.m.)
Arena: 16 Des Ormes Street

Saturday, May 2 2020 – Saint-Antoine (9 a.m. to 4 p.m.)
Municipal building: 4556 Principale Street

Next year's dates will be announced in the spring 2020 edition of the *Let's Talk Kent!* newsletter.

BULKY WASTE

Why wait?

Bulky waste collection is offered to allow residents to dispose of large items that can't be picked up during the week.

If the items you want to throw away can be put in a bag, why wait for bulky waste collection? Sort the items into blue and transparent bags and put them by the roadside for weekly collection.

By limiting the number of bags and boxes of bulky waste, you can reduce the number of people going through your garbage.



SOLID WASTE

SCHEDULE Bulky Waste Pick-up Fall 2019

Place your bulky waste by the road **before 4 a.m.** on the dates indicated below, **but not more than a week (7 days) in advance.**

Collector	Community	Fall Date
Fero Waste and Recycling Inc. 203 Desbrisay Ave. Moncton NB 1 506 855-3376	Sainte-Marie-de-Kent and Balla Philip	October 21
	Saint-Paul, Clairville, Hébert, Birch Ridge, Coal Branch and Adamsville	October 22
	Smith's Corner, Cails Mills, Browns Yard, Fords Mills, Beersville, Pine Ridge, Saint-Norbert, Ford Bank and West Branch	October 23
	Richibouctou-Village, Jardineville and Indian Island LSD	October 21
	Galloway and municipalities of Rexton and Richibucto	October 22
	Bass River, Targetville, Main River, Upper Rexton, Childs Creek, Mundleville and East Branch	October 23
	Sainte-Anne-de-Kent, Saint-Édouard-de-Kent, Baie de Bouctouche, McIntosh Hill, Bouctouche First Nation, Bouctouche Cove, Saint-Maurice and South Branch	October 24
	LSD of Saint-Louis, area of Lower Saint-Charles and Saint-Charles Sud Road starting at Highway 11 heading east	October 28
	Aldouane and municipality of Saint-Louis-de-Kent	October 29
	Saint-Ignace and Saint-Charles (including Gray Road, Saint-Charles Station, Saint-Charles Sud Road starting at Highway 11 heading west and De l'Église Road)	October 30
	Pointe-Sapin, Laketon, Kouchibouguac, Canisto and Portage Saint-Louis	October 31
	Grande-Digue	October 14
	Cocagne	October 15
	Haut-Saint-Antoine, Pelerin, Saint-Antoine Sud, Saint-Damien, Notre-Dame, Gladeside and Dundas	October 16
Miller Waste System Inc. 2276 Route 128 Berry Mills NB 1 506 855-9783	Dixon-Point, Saint-Thomas-de-Kent, Bouctouche Sud, Saint-Grégoire, Saint-Joseph-de-Kent, McKees Mills, Saint-Antoine Nord and Renaud's Mills	October 17
	Collette, Murray Settlement, Rogersville-Est, Acadieville, Acadie Siding, Noirville, Kent Junction and Harcourt	November 4
Contact these organisations for any questions related to the collection.	Rogersville-Ouest, Rosaireville and municipality of Rogersville	November 5
	Municipality of Bouctouche	October 1
	Municipality of Saint-Antoine	October 28
	Indian Island First Nation	October 9-11

Be careful with the following items:

Windows and mirrors

When compacted, glass can shatter, leaving a substantial amount of debris, or worse, even injuring the people handling it.

Before disposing of windows and mirrors:

- Break the glass in advance.
- Place it in a box and write "broken glass" on the box.
- Attach the frame in a 4' x 2' x 2' (1.2 m x 0.6 m x 0.6 m) bundle.

Wood

We accept small quantities of wood grouped in bundles.

Before disposing of wood:

- Remove all nails.
- Attach the wood in 4' x 2' x 2' (1.2 m x 0.6 m x 0.6 m) bundles.
- Each bundle should weigh no more than 50 lb (23 kg).

These procedures have been implemented to ensure the safety of waste collectors and the general public and guarantee more efficient and timely service.



! IMPORTANT REMINDER

Non-transparent bags (black, dark green, peat bags, etc.) are no longer accepted, even during bulky waste collection. Please use transparent bags.



SOLID WASTE

Practical TIPS



Follow these tips to ensure that your bags aren't missed.

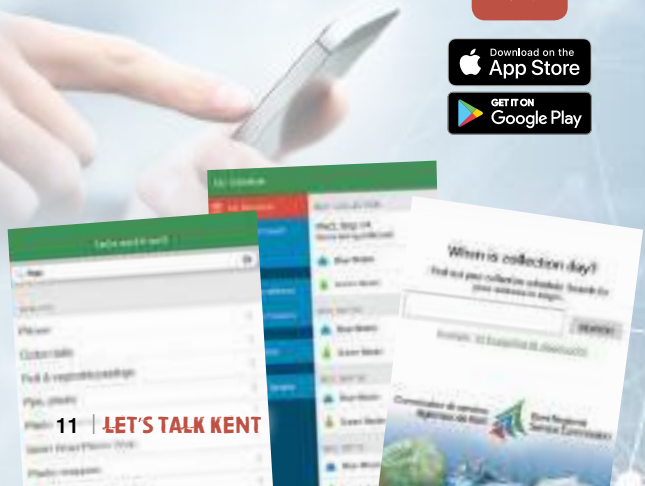
- Put your bags out before 4 a.m.
- Place them to the left of your driveway or yard (imagine you're facing your house) and make sure they're visible from the road.
- Bags and bins must be less than 10 feet (3 m) from the road.
- Clear away branches, ice and snow so that workers have easy and safe access.



LESS THAN 10 FEET
(3 METRES)

Download our free app KENT SERVICES

- Garbage Collection Schedule
- Sorting Guide
- 3-day emergency kit checklist
- Emergency measures alerts (detours, warming centre openings, etc.)



Visit our website at WWW.KRSC.CA

You'll find a full list of the Kent Regional Service Commission's different programs, plus various tools and resources.

Keep in touch...

Bouctouche 506-743-1490
Toll-free 1-855-588-1125

104 Irving Boulevard, Unit 1
Bouctouche, NB E4S 3L5

Richibucto 506-523-1820
25 Cartier Boulevard, Unit 145
Richibucto, NB E4W 3W7

www.krsc.ca @Kentrsc



1 855 588-1125