



# LET'S TALK KENT!

## Corporate Services | 1

2019 Budget  
Projects Under Way

## Planning Services | 3

Building Permits

## Recreation | 4

Cultural Societies  
Website

## Solid Waste | 5

Sorting Hints  
Bulky Waste  
Special Collection Schedule  
Mobile Eco-Depot  
Recycle NB

## Public Safety | 10

Our Initiatives  
Mobile App

## Immigration | 11

Did you know...?

>>Volume 4  
Spring  
2019

Français au verso

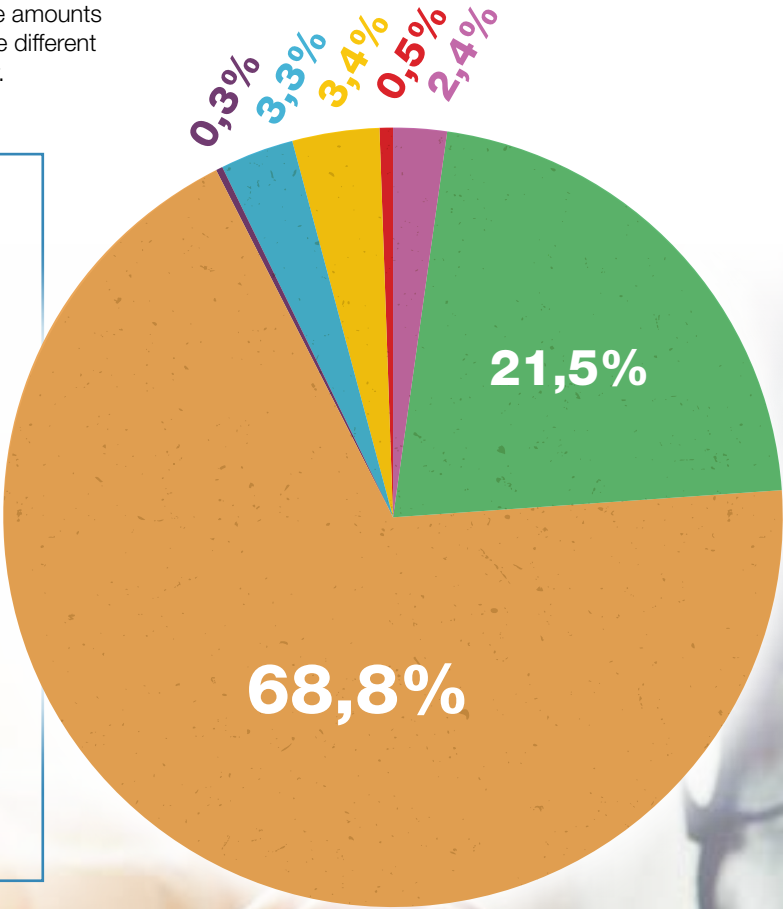
The members of the Board of Directors of the Kent RSC are proud to present you with this bulletin on the RSC's services and activities for spring and summer 2019.

The Board members are working hard to ensure that the region will continue its development and that the services it offers will meet the needs of its citizens.

# Kent Regional Service Commission's 2019 BUDGET

Here is the breakdown for the Kent Regional Service Commission's 2019 Budget. The amounts allocated are for services provided by the different divisions to the residents of Kent County.

- Regional collaboration
- Urban planning
- Solid waste management
- Upriver farmers' market
- Implementation of the master recreation plan
- Centre Kent-Nord
- Tourism





## Projects Under Way

The many projects under way encompass economic and community development. The Kent RSC's priority projects include three development activities, one relating to **agriculture**, one for **youth** and holding a **job fair and tradeshow**. These activities will allow our region to continue efforts to develop its economy, to keep our youth here in Kent County and to help our businesses to promote their products and activities and to attract more employees.



We are also working on a **public transportation** project for the region. We already have a community transportation system (Transport Kent), but there are opportunities to improve service and to make it more accessible to the public. Kent County was chosen by a provincial committee on public transportation to examine the possibility of establishing a transportation system. The committee is working with the help of the Kent RSC and the results of a feasibility study should be released later in the year.

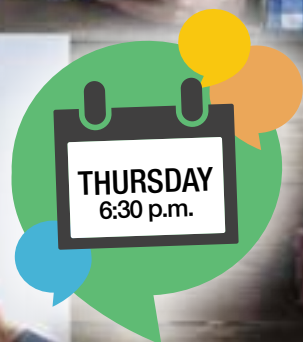
## Chairmanship

We also want to thank **Maurice Maillet**, who has chaired the Kent RSC for the past three years. Mr. Maillet will finish his third year as Chair of the Kent RSC in May and is not re-offering. Under Mr. Maillet's leadership, the region has consolidated its position as one of the most cooperative and proactive in New Brunswick. Mr. Maillet will remain on the Board representing the LSDs and will continue to contribute as a regular member. There will be an election for a new Chair at the Annual General Meeting in May.



## Board Meetings

The Board invites the public to attend the public meetings held on the **third Thursday of the month at 6:30 p.m.** at the Kent RSC's Richibucto office (25 Cartier Blvd, Unit 145). Simultaneous interpretation is provided.



Commission de services  
régionaux de Kent



Kent Regional  
Service Commission

# BUILDING permit

## Did you know?

Common projects often require a building permit:

- Construction of residential buildings (houses, apartment buildings and mobile homes)
- Construction of commercial, industrial and institutional buildings
- Construction of outbuildings (detached garages, sheds, barns)
- Certain types of renovations (structural changes to a building)
- Decks, ramps and stairways
- Fences
- Adding a pool
- Electrical work (replacing an electrical panel)

You aren't sure whether your project requires a permit? Contact us to speak to a building inspector who will know how to answer your questions.



To get a building permit, you will need the following information and material. Consult this checklist to make sure that you have everything you need before meeting with our building inspectors.

- ☐ **P.I.D. number** (on your tax bill);
- ☐ **Estimated cost of the project;**
- ☐ **Full set of plans, to scale;**
- ☐ **Required approvals**
  - ☐ Department of Health (sewer system)
  - ☐ Department of Transportation and Infrastructure (setback and access permit)
  - ☐ Department of Environment and Local Government (if the site is within 30 m of a watercourse or includes wetlands)
  - ☐ Commercial, industrial or institutional buildings may require additional approvals (Fire Marshal, etc.)
- ☐ **Any other requirement needed to certify compliance or approval by other government bodies (check with our building inspectors).**



# RECREATION

in Kent

**Recreation** is more than just sports:  
It takes in the **arts, culture, tourism** and  
much more. It's everything **we do**  
in our free time!



**Did you know**  
that the Kent  
region is home  
to three cultural  
societies and a  
cultural centre?

Stay informed about the events and activities offered by any  
of our cultural societies by visiting the recreation calendar at:

**[www.recreationkent.com](http://www.recreationkent.com)**



## Sorting HINTS



### Leaves

When spring arrives the snow melts. What should you do with all the dead leaves that will soon show up on your lawn?

1. Ideally, leave them there and mulch them with your mower to provide nutrients for your soil. It's the greenest way to go!
2. If you decide to rake, you can put your leaves beside the road in **transparent green bags** or **paper bags** (but not if it's raining).
3. Make sure your bags are closed. We won't pick up open bags.
4. We ask residents to limit themselves to a total of 15 bags per dwelling per pick-up (example: 10 bags of leaves, 2 green bags and 3 blue bags).



### Cardboard

If you have cardboard to throw out:

1. Put small pieces in your blue bag
2. Larger boxes can be broken down into pieces that are easy to handle and bundled
  - Tie or tape the bundles
  - Bring them out only the weeks for blue bag pick-up
  - Don't bring them out when it's raining, or cover them with a tarp



### Plastic

**Don't** recycle:

1. Plastic No. 6 (look on the bottom of the container to find the symbol)
2. Packaging sealed at both ends (vacuum sealed)
3. Most individual portion containers (yoghurt, coffee pods, sauces)



# BULKY WASTE

(Large items)

Special pick-up for  
large objects, not for large  
quantities of waste

## Did you know?

If you can put it in a bag, this waste can probably be picked up on the normal pick-up day.

We will even accept one clear bag of construction and demolition waste every two weeks (on clear bag pick-up day) to help you get rid of it faster. Insulation batts, small pieces of wood, siding, etc.

Opaque bags (black, dark green, orange, etc.) ARE NO LONGER ACCEPTED, even for bulky waste. Use boxes or transparent clear bags instead.



Follow these simple rules to help us to keep our garbage collectors safe and able to work efficiently:

- ☐ We will pick **NO MORE THAN 15 "ITEMS"** per home per pick-up (for a total of 45 per year).
  - One item is one thing to pick up. For example, one piece of furniture, one appliance, one bundle, one bag, etc.
- ☐ All your smaller items should be organized into bags, boxes or bundles measuring at a maximum 4' x 2' x 2' (1.2 x 0.6 x 0.6 m) and weighing 50 lb. (23 kg).
- ☐ We won't pick up anything left in a trailer or in the box of a truck.
- ☐ Please place your items in an orderly pile that is easily accessible and located less than 10 ft. (3 m) from the side of the road.
- ☐ Try not to put your bulky waste out more than a week ahead of time out of respect for the neighbourhood and to keep everyone safe on our roads.
- ☐ We will only pick up 15 items by civic number. Try not to use shared pick-up points in order to avoid confusion and delays.

*This does not apply to private roads that trucks are not permitted to enter or to multi-family dwellings served by the Commission.*

# 2019 SCHEDULE

## of Special Pick-ups (bulky waste)

Make sure you have your bulky waste on the side of the road **before 4:00 AM** on the day shown below.

Garbage Collectors	Communities	Spring	Summer	Fall
<b>Fero Waste and Recycling Inc.</b> 203 Desbrisay Ave Moncton (NB) 1 506 855-3376	Sainte-Marie-de-Kent and Balla Philip	May 27	August 12	October 21
	Saint-Paul, Clairville, Hébert, Birch Ridge, Coal Branch and Adamsville	May 28	August 13	October 22
	Smith's Corner, Cails Mills, Browns Yard, Fords Mills, Beersville, Pine Ridge, St-Norbert, Ford Bank and West Branch	May 29	August 14	October 23
	Richibouctou-Village, Jardineville and Indian Island LSD (except the First Nation)	May 27	August 9	October 21
	Galloway and municipalities of Rexton and Richibucto	May 28	August 6	October 22
	Bass River, Targetville, Main River, Upper Rexton, Childs Creek, Mundleville and East Branch	May 29	August 7	October 23
	Sainte-Anne-de-Kent, Saint-Édouard-de-Kent, Baie de Bouctouche, McIntosh Hill, Bouctouche First Nation, Bouctouche Cove, St-Maurice and South Branch	May 30	August 8	October 24
	Saint-Louis LSD, region of Lower Saint-Charles and Saint-Charles Road South east of Highway 11	May 20	August 9	October 28
	Aldouane and municipality of Saint-Louis-de-Kent	May 21	August 6	October 29
	Saint-Ignace and Saint-Charles (including Gray Road, Saint-Charles Station, Saint-Charles Road South west of Highway 11 and chemin de l'Église)	May 22	August 7	October 30
	Pointe-Sapin, Laketon, Kouchibouguac, Canisto and Portage St-Louis	May 23	August 8	October 31
	Grande-Digue	June 3	August 19	October 14
	Cocagne (except Murray Road and Route 535 west of number 644)	June 4	August 20	October 15
	Haut-Saint-Antoine, Pelerin, Saint-Antoine Sud (including Murray Road and Route 535 west of number 644), Saint-Damien, Notre-Dame, Gladeside and Dundas	June 5	August 21	October 16
	Dixon-Point, Saint-Thomas-de-Kent, Bouctouche Sud, Saint-Grégoire, Saint-Joseph-de-Kent, McKees Mills, St-Antoine Nord and Renauds Mills	June 6	August 22	October 17
<b>Miller Waste System Inc.</b> 2276 route 128 Berry Mills (NB) 1 506 855-9783	Collette, Murray Settlement, Rogersville-Est, Acadieville, Acadie Siding, Noinville, Kent Junction and Harcourt	June 10	August 26	November 4
	Rogersville-Ouest, Rosaireville and municipality of Rogersville	June 11	August 27	November 5
<b>Contact these localities for any questions related to the collection</b>	Municipality of Bouctouche	May 7	N/A	October 1 <sup>st</sup>
	Municipality of Saint-Antoine	May 27	N/A	October 28
	Indian Island First Nation	May 8-10	N/A	October 9-11



# New Service: MOBILE ECO-DEPOT

In collaboration with **Eco360 Sud-est**, the **Kent RSC** is proud to present the mobile Eco-Depot program. This **FREE** service is a way to get rid of bulky or hazardous materials, construction and demolition waste and other similar items at a site near you.

## Use this service if you are A RESIDENT who...

- doesn't want to wait for the special home pick-up to get rid of bulky items;
- has more than the limit of 15 items for roadside pick-up of bulky items;
- wants to get rid of items that we don't pick up at roadside, such as:
  - Hazardous products (batteries, cooking oil, aerosols, paint, compact fluorescent bulbs, fertilizer, chemicals, propane cylinders, etc.)
  - Tires (limit of 8 per client)
  - Ash
  - Small motorized tools (emptied of oil and gasoline)
  - Lobster traps (limit of 5 per client)

### Note:

- We ask residents to **sort their load by type of material to make unloading easier**;
- Clients must limit themselves to a maximum amount equivalent to a half-ton truck or a utility trailer;
- Only residents may use this program. We don't accept commercial waste;
- We don't accept regular waste (blue, green, clear) at these events.



## BRING YOUR ITEMS TO ONE OF THE FOLLOWING MOBILE ECO-DEPOTS:

<b>Saturday, April 27 – Saint-Louis-de-Kent (9:00 - 4:00)</b> Municipal Building, 10511 Main Street	<b>Saturday, May 25 – Bass River (9:00 - 4:00)</b> Country Club, 20 Fearon Cross Road
<b>Saturday, July 20 – Cocagne (9:00 - 4:00)</b> Arena, 19 Marina Road	<b>Saturday, August 24 – Rogersville (9:00 - 4:00)</b> Aréna, 16 Des Ormes Street
<b>Saturday, September 14 – Bouctouche (9:00 - 4:00)</b> Parking lot B at the J.K. Irving Centre, 30 Évangéline St.	<b>Saturday, November 30 – Saint-Antoine (9:00-4:00)</b> Municipal Building, 4556 Main Street



# Let's keep New Brunswick Clean & Green



## TIRE RECYCLING

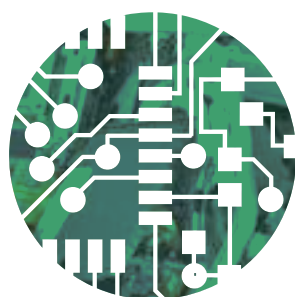
It is easy to recycle tires. New Brunswickers recycle a million tires a year. Bring them to any garage or tire retailer in the province. There is no charge to drop them off. However, due to limited storage space, there is a drop-off limit of five tires.



## PAINT RECYCLING

New Brunswickers recycle 240,000 litres of paint and 90 tons of containers yearly. Recycle your leftover paint and your empty paint containers at no charge.

**Find a depot [www.recyclenb.com/paint-recycling](http://www.recyclenb.com/paint-recycling).**



## ELECTRONICS RECYCLING

The electronics recycling program recycled 799 metric tonnes of electronics in its first year of operation. Recycle your unwanted electronics for free.

**Find a depot [www.recyclenb.com/electronics-recycling](http://www.recyclenb.com/electronics-recycling).**



## OIL AND GLYCOL RECYCLING

Did you know that just one litre of oil could pollute one million litres of water? Recycle used oil, oil filters, oil and glycol containers for free.

**Find a depot [www.recyclenb.com/oil-and-glycol-recycling](http://www.recyclenb.com/oil-and-glycol-recycling).**

For more information: [www.recyclenb.com](http://www.recyclenb.com)

Tel.: 506-454-8473 • Toll Free: 1-888-322-8473

## Our INITIATIVES

The Kent RSC's Board has charged its employees with supporting residents of the Kent region to ensure that all are ready for the next emergency situation through a number of initiatives, including:

- Preparation and distribution of posters on how to be ready for **72 hours** in case of an emergency;
- Increased **communication and awareness** with our citizens before, during and after crisis situations via various media partnerships and the use of our social media;
- Facilitate **support and collaboration** among our municipalities, local service districts, first responders and the regional emergency measures coordinator;
- Provide **training** to help our citizens to protect themselves better. This training is offered during Public Safety Days



**Public Safety Days will be back in 2019.**  
You will receive more information about these free family events later this spring.

## MOBILE Application

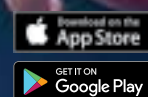


### Did you know?

The Kent Regional Service Commission has a free mobile application that combines the solid waste and emergency measures departments. Download the **Kent services** app for free to receive notices when warming centres are open or roads are blocked in an emergency, reminders about 72-hour emergency preparedness lists and more...



Your safety is our priority!





# IMMIGRATION

## Did you know...?

Kent County continues to work on attracting talent from around the world to secure the growth we need, ensuring that local manufacturers keep operating right here so our region continues to thrive and prosper.

Here's an update from MAGMA-Kent after our first full year of operation. By partnering with 15 employers in Kent county we have helped settle 70 people, including 25 children. Two families have already bought a home in our region!

Let's make our newcomers feel **welcome** and **at home** here. If you see a newcomer, **smile and say hello!**

Heck, invite them for supper!  
You may be surprised by what you will **discover**.

## For more information about how you can be involved with MAGMA-Kent as:

- a **community** member who is looking to give your time to support newcomers in the area;
- a **newcomer** looking settlement resources, community activities, or other social supports; or
- an **employer** looking for support in retaining and strengthening a diverse workforce or clientele;

Contact MAGMA-Kent  
506 523-1842 | [infokent@magma-amgm.org](mailto:infokent@magma-amgm.org)  
[www.magma-amgm.org](http://www.magma-amgm.org)



Visit our website at  
**WWW.KRSC.CA**

You'll find a full list of the Kent Regional Service Commission's different programs, plus various tools and resources.

## Keep in touch...

**Bouctouche 506-743-1490**  
Toll-free 1-855-588-1125

104 Irving Boulevard, Unit 1  
Bouctouche, NB E4S 3L5

**Richibucto 506-523-1820**  
25 Cartier Boulevard, Unit 145  
Richibucto, NB E4W 3W7

[www.krsc.ca](http://www.krsc.ca)  @Kentrsc

