



LET'S TALK KENT!

Corporate services | 1

2022 Budget
New Employee
Local Governance Reform
Your RSC and the reform

Planning | 4

New Employee
Cloudpermit
2021, A Record Year

Recreation | 6

A new, non-motorized-trail
guide in the Kent region

Public safety | 7

Community Safety Plan

Solid waste | 8

3-Stream Program
Tips to Make Sure Your Bags
Don't Get Missed
Mobile Eco Depots in 2022
Bulky Waste

Contacts | 11

>> Volume 10
Spring-Summer
2022



Français au verso

The Board of Directors and staff of the Kent Regional Services Commission (KRSC) are proud to present the 2022 spring and summer newsletter.

BUDGET 2022

The KRSC's 2022 budget is \$4,508,252, broken down as follows.
The detailed budget is available on our website.

Regional
collaboration:

3,1 %

Planning
services:

20,6 %

Solid waste
management:

69,5 %

Upriver Country
Market:

0,3 %

Regional
recreation :

1,7 %

Kent North
Centre :

3,2 %

Tourism :

0,4 %

By-law
enforcement:

1,2 %



New Employee

The KRSC is proud to announce that Louise Girouard has been hired as a part-time administrative assistant for the Bouctouche and Richibucto offices. Louise comes to us with a number of years of customer service experience in both the financial and provincial sectors. Her experience, knowledge and background will be of great benefit to the KRSC's clients and partners.

LOCAL GOVERNANCE REFORM

The local governance reform underway will have a major impact on the Kent region. The region is currently comprised of 27 entities (2 towns, 4 villages, 1 rural community and 20 local service districts), but after the reform, it will consist of 6 municipal entities and 1 rural district. The residents of the Baie-Sainte-Anne and Shediac Bridge-Shediac River region will also be joining us as of January 1, 2023.

The territories of these new entities are shown on this map.

- 25:

Village of Rogersville + Collette, Acadieville & Rogersville LSDs
- 26:

Villages of Saint-Louis-de-Kent + Town of Richibucto + Saint-Louis, Saint-Ignace, Aldouane & Saint-Charles LSDs
- 28:

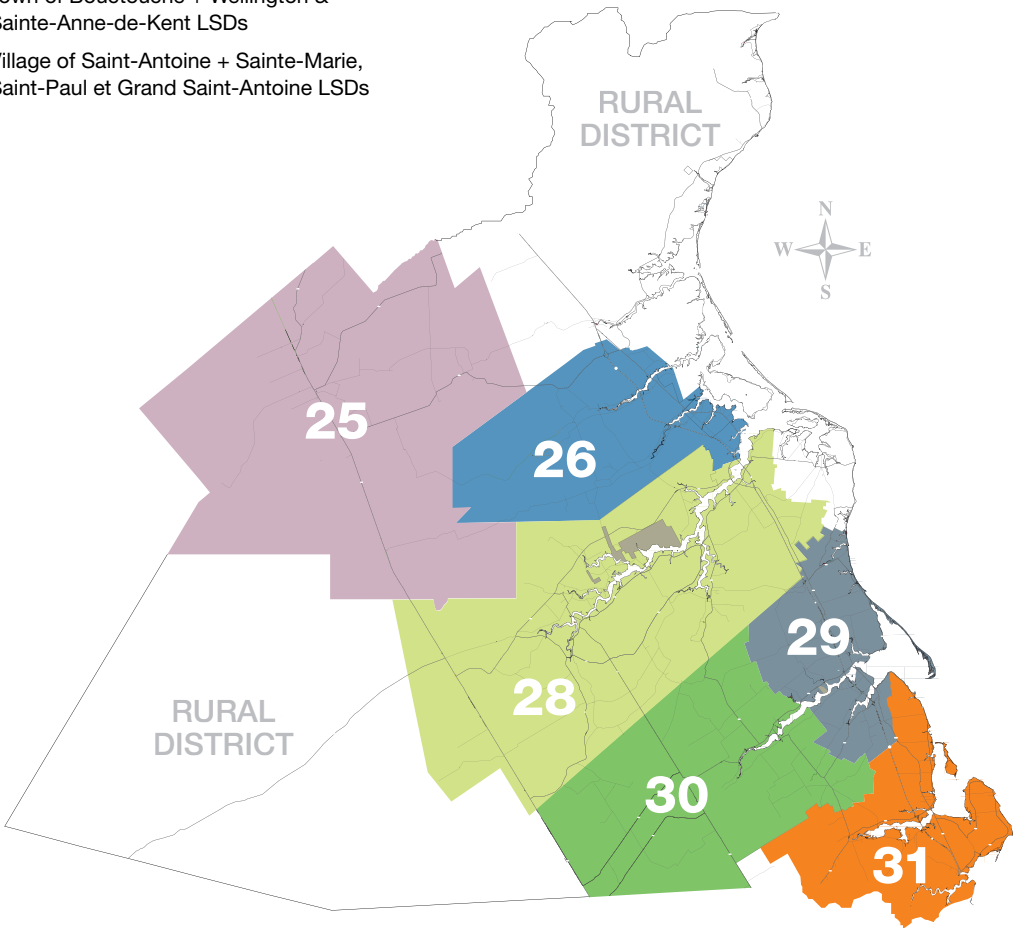
Village of Rexton + Richibucto, Weldford & Harcourt LSDs
- 29:

Town of Bouctouche + Wellington & Sainte-Anne-de-Kent LSDs
- 30:

Village of Saint-Antoine + Sainte-Marie, Saint-Paul et Grand Saint-Antoine LSDs
- 31:

Rural Community of Cocagne + Grande-Digue, Dundas et Shediac Bridge-Shediac River LSDs
- Rural District:**

Carleton, Pointe-Sapin, Baie Ste-Anne, Hardwicke, Escuminac, Cap-de-Richibouctou & a portion of Harcourt LSDs



YOUR RSC AND THE REFORM

Six new services will be added to the KRSC's current mandatory responsibilities, which already include local planning and solid waste management, as well as regional collaboration, bylaw enforcement and services related to the Upriver Country Market and the Kent North Imperial Centre.

Community development

Beginning in 2022, the Kent Community Inclusion Network (CIN) will be incorporated into the KRSC. We will play an important role in areas such as affordable housing, newcomer settlement services and the promotion of diversity, social inclusion and healthy communities.

Community transportation

Community transportation services allow people to access medical care, food, family support, banking and other services. Transport Kent will come under the KRSC umbrella as of 2022, so that the service can be maintained and even broadened.

Economic development

The KRSC will work in partnership with local organizations to ensure regional growth. This mandate also involves a workforce development strategy that includes services geared to retaining newcomers.

Promotion of regional tourism

This entails a regional approach for all tourism-promotion stakeholders, with a view to expanding the tourism offer in the Kent region. The KRSC will work closely with the tourism industry to find the best way to promote our beautiful region and its many attractions.

Cost sharing for recreational infrastructure

The KRSC will serve as a starting point for collaboration aimed at sharing costs. We have experience in this regard with the Kent North Imperial Centre and the Upriver Country Market. A recreation committee has been struck and will work on this and other files related to activities in our region.

Public safety collaboration

The reform calls for the establishment of a public safety committee in the RSCs. The KRSC is proud to have established such a committee in 2014. Since then, the committee has expanded its scope to the following topics: police, ambulance, emergency response, fire, public safety, infrastructure, welfare, health and education. The committee will continue its successful collaboration.



New Employee

Austin Fillmore is originally from the Kent area and is thrilled to be embarking on this new adventure as a building inspector with the KRSC. After graduating from CCNB Dieppe with a certificate in sales, Austin worked in a variety of customer service and support roles. He held a management position in the trucking industry for the past few years. He has a keen interest in construction and is excited to start helping people in the region with their projects. Austin is now back in his hometown with his family after living in the Moncton area for the past decade and is excited to be raising his children here.



Cloudpermit

A new e-licensing service is about to go live, with a view to better serving customers who want to apply for a permit at a time convenient to them.

The system, called Cloudpermit, will make the inspectors' work easier and increase organizational efficiency during inspections. Ongoing communication with owners, developers and contractors will be done electronically to avoid costly delays. Thanks to a direct connection in their vehicle, inspectors will be able to document the condition of construction sites in real time.

This is another step towards electronic files, sustainability and service modernization.



2021, A RECORD YEAR

Despite the pandemic, 2021 was a record year with 621 permits issued and just over \$50 million worth of construction. Investors added 143 new buildings to the inventory of residential properties, up from 108 the previous year. The Planning Department also issued 161 development permits for various minor projects. With respect to subdivisions, a significant increase in the number of plans received led to the creation of 290 lots and changes to 75 plots of land, a 190% increase compared to the previous year. In addition, 165 transfer and survey documents were approved.

At its monthly meetings, the Planning Review Advisory Committee (PRAC) reviewed 198 cases requiring variances. Having two urban planners working together to ensure consistent land development throughout the region, coupled with the strong work ethic of our development officers, enhances the quality of the service provided to KRSC residents. In addition, our Bouctouche and Richibucto offices both offer courteous and professional service.

621
permits
issued

143
new
buildings

creation
of **290**
lots



A new, non-motorized-trail guide in the Kent region



The Kent Trail Guide offers visitors an opportunity to explore the region's wooded areas, rivers and coasts. The compendium describes a number of trails and provides details on length and level of difficulty, as well as maps. A total of 53 kilometers of trails are presented in the guide. This is just the start of a larger initiative aimed at extending non-motorized trails across the Kent region. The KSRC is pleased to have collaborated on this project with the Kent Region Community Capacity and Resiliency Committee, which came up with the idea.

<https://www.krsc.ca/recreation/>



COMMUNITY SAFETY PLAN

In partnership with the Canadian Municipal Network on Crime Prevention (CMNCP), the KRSC will be launching a community safety plan by the end of 2022. The goal is to create a plan to bolster regional safety in the long term.

Your contribution is important!

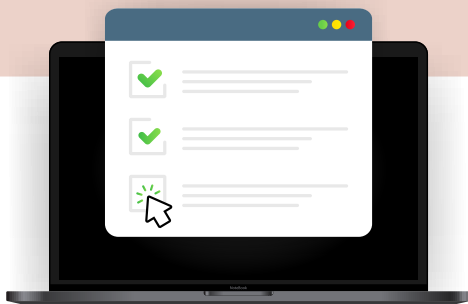
Your participation will help us gauge the sense of safety of residents so that we can work together to develop local initiatives to improve safety for the entire community.

Participate for a chance to win a gift certificate from a local business!



Take The Survey

The community safety survey is available online at www.krsc.ca or in printed form at a location near you. Call us at 506-743-1490 to find out where to get your copy.



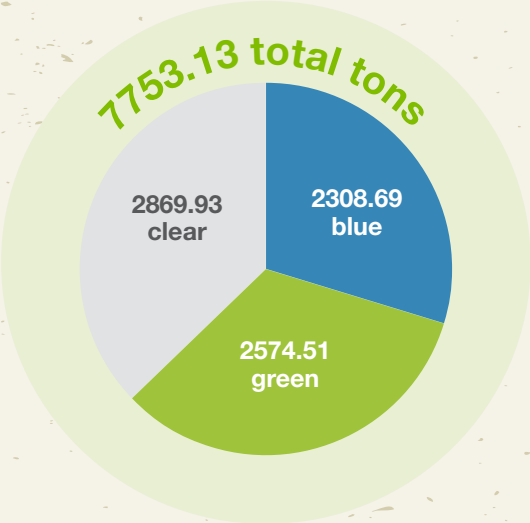
Participate In A Public Consultation

If you're invited to participate in a public consultation, please say yes. The information gathered will be kept confidential and help make our region safer.

Your contribution will help shape the future safety of your community.

3-STREAM Program

Thank you for continuing to sort your waste at home. We continue to see a high percentage of recyclable and compostable materials from the Kent region being processed at the Eco360 sorting centre.



Did you know that...

...your recyclables don't have to be perfectly clean? A quick rinse or wipe-down is all that's needed to ensure that the item won't contaminate the rest of the bag's contents.



TIPS TO MAKE SURE YOUR BAGS DON'T GET MISSED



Put your bags out **before 4 a.m.** on collection day (or the night before).

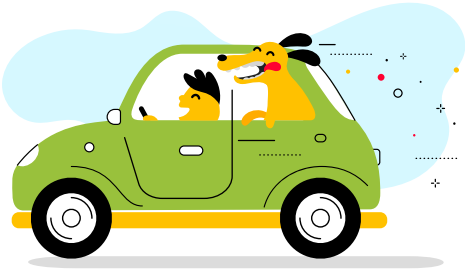


Facing your home, place your **bags/ bins on the left side** of your yard.



Your bags/bins should be **within 10 feet (3 m)** of the edge of the road.

FREE drive-through service for RESIDENTIAL WASTE disposal



WE ACCEPT THE FOLLOWING ITEMS:

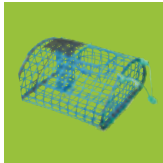
Maximum quantity equivalent to a half-ton truck or utility trailer load.
Residents are asked to sort their load by type of material to facilitate unloading.



Household hazardous waste



Glass and cardboard (this material will be recycled)



Marine debris (limit of 5 traps and 10 buoys per resident)



Appliances and furniture



Construction and demolition waste (make sure it's easy and safe to transport)



Tires (limit of 8 per resident)



Ash



And more!



Automotive parts (except tires)



Unsorted waste



Regular waste eligible for roadside pick-up (blue, green and clear bags)



Commercial waste

ECO-DEPOT DATES AND LOCATIONS FOR 2022

**Eco-Depots in Shediac are open for two days, from noon to 8 p.m.*

April 30 - Saint-Louis de Kent (9 a.m. to 4 p.m.) Municipal building, 10511 Principale Street	September 21 and 22 - Shediac (noon to 8 p.m.) Festival arena parking lot: 84 Festival Street
May 25 and 26 - Shediac (noon to 8 p.m.) Festival arena parking lot: 84 Festival Street	September 24 - Bouctouche (9 a.m. to 4 p.m.) J.K. Irving Centre - parking lot B: 30 Évangéline Street
June 25 - Rogersville (9 a.m. to 4 p.m.) Arena: 16 Ormes Street	November 19 - Saint-Antoine (9 a.m. to 4 p.m.) Municipal building, 4556 Principale Street
June 16 - Cocagne (9 a.m. to 4 p.m.) Arena: 19 Marina Road	December 3 - Elsipogtog (9 a.m. to 4 p.m.) Economic development office: 29 Big Cove Road

BULKY WASTE (Large Items)

Special pick-up for large objects, not large quantities of waste

Here is the bulky waste collection schedule for 2022. Be sure to place your bulky waste at the curb **before 4 a.m.** on the day listed below.

Visit our website or contact us for a reminder of what to do.

Garbage collectors	Communities	Spring	Summer	Fall
Fero Waste and Recycling Inc. 203 Desbrisay Ave Moncton, NB 506-855-3376	Grande-Digue	June 6	August 22	October 24
	Cocagne (excluding Murray Road and Route 535 west of number 644)	June 7	August 23	October 25
	Haut-Saint-Antoine, Pelerin, Saint-Antoine Sud (including Murray Road and Route 535 west of number 644), Saint-Damien, Notre-Dame, Gladeside and Dundas	June 8	August 24	October 26
	Dixon-Point, Saint-Thomas-de-Kent, Bouctouche Sud, Saint-Grégoire, Saint-Joseph-de-Kent, McKees Mills, Saint-Antoine Nord and Renauds Mills	June 9	August 25	October 27
	Sainte-Marie-de-Kent and Balla Philip	May 30	August 15	October 10
	Saint-Paul, Clairville, Hébert, Birch Ridge, Coal Branch and Adamsville	May 31	August 16	October 11
	Smith's Corner, Cails Mills, Browns Yard, Fords Mills, Beersville, Pine Ridge, Saint-Norbert, Ford Bank and West Branch	June 1	August 17	October 12
	Richibouctou-Village, Jardineville and Indian Island (not including the First Nation)	June 6	August 22	October 24
	Galloway and the municipalities of Rexton and Richibucto	June 7	August 23	October 25
	Bass River, Targetville, Main River, Upper Rexton, Childs Creek, Mundleville and East Branch	June 8	August 24	October 26
	Sainte-Anne-de-Kent, Saint-Édouard-de-Kent, Bouctouche Bay, McIntosh Hill, Bouctouche First Nation, Bouctouche Cove, Saint-Maurice and South Branch	June 9	August 25	October 27
	Saint-Louis LSD	May 16	August 2	October 17
	Saint-Ignace and Saint-Charles, Aldouane and municipality of Saint-Louis de Kent	May 17	August 3	October 18
	Pointe-Sapin, Laketon, Kouchibouguac, Canisto and Portage Saint-Louis	May 18	August 4	October 19
McAction Enterprise Inc. 4112 Route 515 Sainte-Marie-de-Kent, NB 506-743-3275	Collette, Murray Settlement, Rogersville -Est, Acadieville, Acadie Siding, Noinville, Kent Junction and Harcourt	May 9	August 18	October 10
	Rogersville-Ouest, Rosaireville and the municipality of Rogersville	May 12	August 2	October 13
Call your local government office for any questions related to collection.	Municipality of Bouctouche	May 24	N/A	October 11
	Municipality of Saint-Antoine	June 1	N/A	October 26
	Indian Island First Nation	May 4 to 6	N/A	October 5 to 7

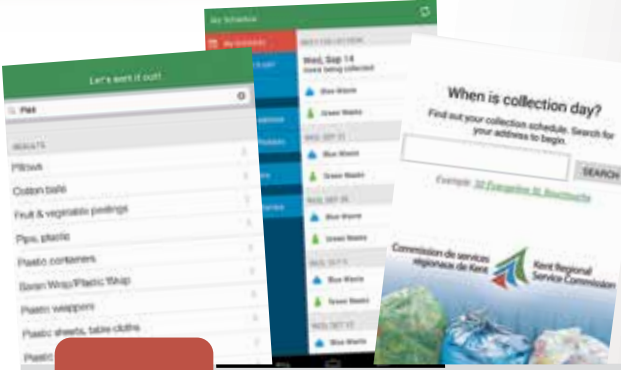


Download the

KENT SERVICES

mobile app for information that applies directly to your address

- Garbage collection schedule
- Sorting guide
- Collection interruption or change alerts
- Special event alerts (bulky waste collection, Eco-Depots, Public Safety Days, etc.)
- 72-hour preparedness reminders
- Notification of emergency measures (detours, opening of warming centres, etc.)



Visit our website at **WWW.KRSC.CA**

The site contains a full list of KSRC programs, as well as various tools and resources.

Keep in touch...

Bouctouche
506-743-1490

104 Irving Boulevard, Unit 1
Bouctouche, NB E4S 3L5

Richibucto
506-523-1820

25 Cartier Boulevard, Unit 145
Richibucto, NB E4W 3W7

Toll-free
1-855-588-1125

 @Kentsrc

