



# LET'S TALK KENT!

## General Services | 1

2023 Budget

Board of Directors

Director of Finance

Economic Development  
and Tourism

## Planning Department | 3

Building Permits

## Public Safety | 4

Community Safety Plan

## Recreation | 5

Kent Trail Guide

KidSport – Kent region

## Community Development | 7

Housing

## Regional Transportation | 8

Need To Get Around?

Volunteer

## Solid Waste | 9

Mobile Eco-Depots

Bulky Waste

## Contacts | 11

>> Volume 12

Spring-Summer 2023

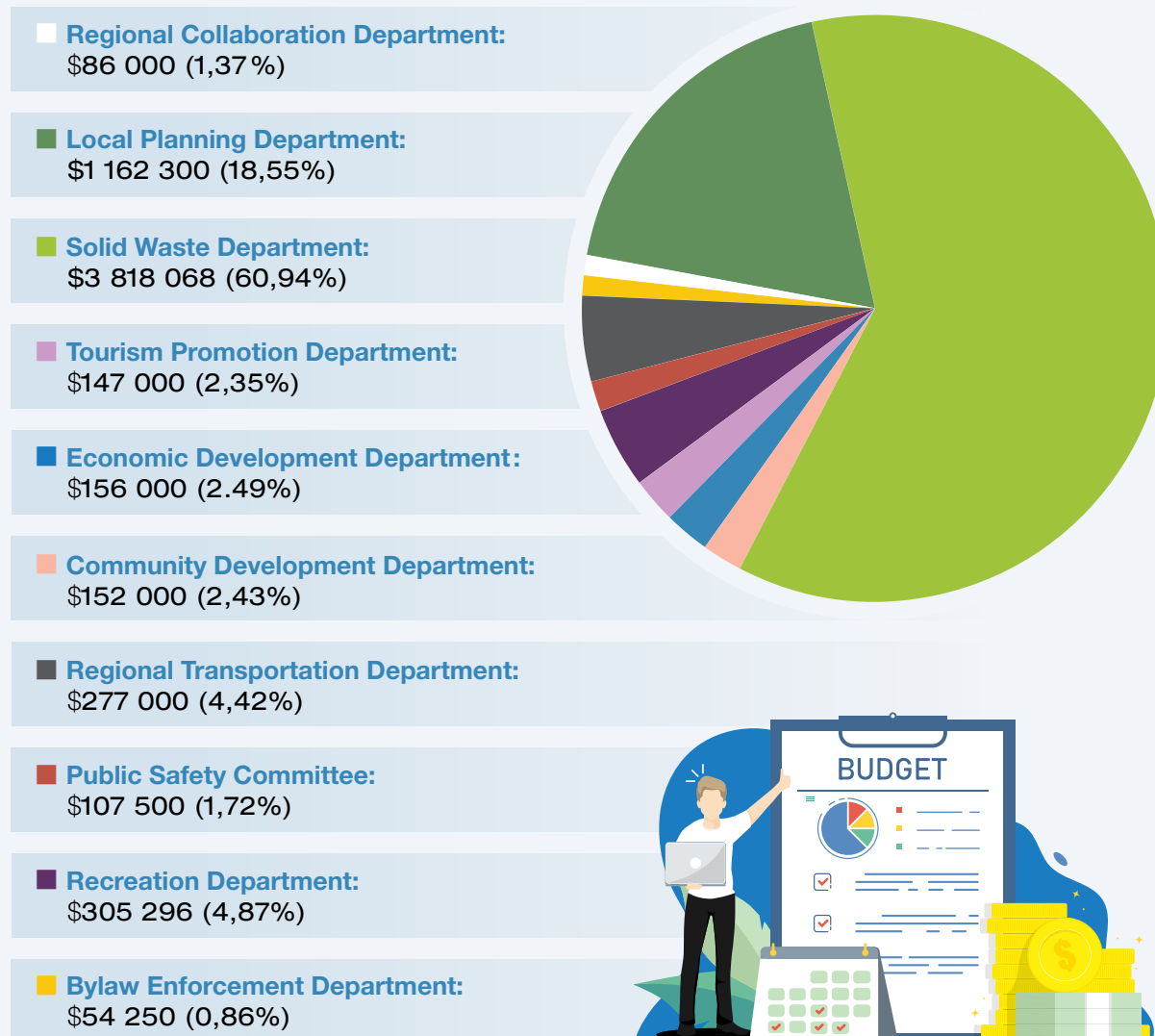


Français au verso

The members of the Board of Directors (Board) and the staff of the Kent Regional Service Commission (KRSC) are proud to present this newsletter for spring and summer 2023.

## 2023 BUDGET

KRSC's total 2023 budget is \$6,265,414, broken down as follows. You can consult the detailed budget on our website.



## BOARD OF DIRECTORS

Following the November 2022 municipal elections, new municipal councils took office on January 1, 2023, to serve the new entities in the Kent region. The Mayors of the six municipalities and the President of the rural district now sit on the Board of Directors (Board) of KRSC. Here is your Board for the next four years:



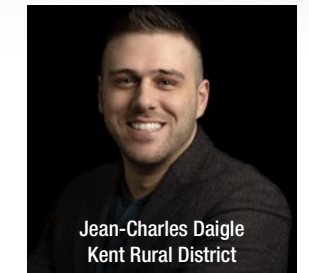
Aldéo Saulnier, President  
Town of Grand-Bouctouche



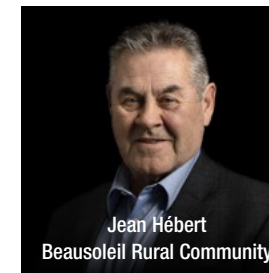
Tina Beers, Vice-President  
Village of Five Rivers



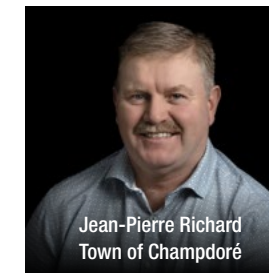
Jimmy Bourque  
Village of Nouvelle-Arcadie



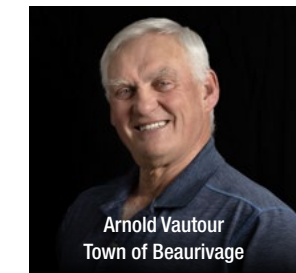
Jean-Charles Daigle  
Kent Rural District



Jean Hébert  
Beausoleil Rural Community



Jean-Pierre Richard  
Town of Champdoré



Arnold Vautour  
Town of Beaurivage

### Director of Finance



Since January 1, 2023, KRSC provides many more services. This has affected the Commission's budget, which has increased by nearly 40%. For this reason, KRSC is proud to add to its team Lynn Landry Caissie, a Chartered Professional Accountant, as Director of Finance. Lynn brings along her expertise as an accountant and her experience with municipalities. She is originally from the Kent region, and her background, knowledge and experience will represent a great asset for KRSC.

### Economic Development and Tourism



To meet both growing demand and the requirements of Government Reform, the KRSC has hired Ms. Marie-Paul Robichaud as Director of Economic Development and Tourism. Ms. Robichaud's experience and her many years in the municipal sector, as well as her time with CBDC Kent and Entreprise Kent, will be useful in her new career with KRSC. Her knowledge will be an exceptional asset for the organization and for the region.



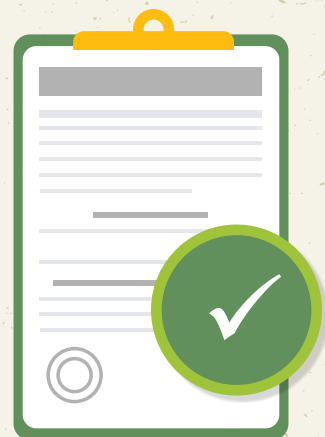
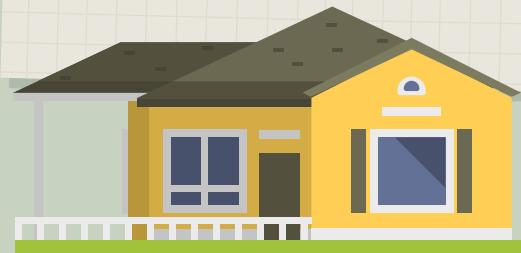
## BUILDING PERMIT:

### A building permit is required for:

- New construction of a building or structure
- The construction of an addition to an existing building
- Construction or installation of accessory building such as: detached garage, shed, gazebo, decks
- Structural alterations
- Demolition
- Change of use of an existing building

**A building permit can be only be issued where the work conforms to:**

- ✓ The National Building Code of Canada,
- ✓ The building bylaw or regulation applicable, and
- ✓ with the terms and conditions of the building permit.



**As a property owner, consulting with our building inspectors and development officers in applying for a building permit, or even before purchasing a property, will:**

- help you protect your investment,
- help you make an informed decision,
- help to ensure the occupant's safety and comfort,
- help make you aware of codes, bylaws, and regulations applicable, and
- help guide you in the process of undertaking a project.

Our staff will be happy to answer your questions by email, phone or in person at one of our offices in Richibucto and Bouctouche.

## COMMUNITY SAFETY PLAN

KRSC has adopted a Community Safety Plan (CSP). A consultation process with local organizations, first responders and educational institutions, combined with public surveys, led to the establishment of this five-year plan, the first of the kind in New Brunswick.

We recognized that the challenges that go along with community safety are varied and complex. We all share responsibility for safety and the perception of safety in our community. This CSP describes the steps in an approach designed to deal with existing and emerging problems having an impact on safety in Kent through social development, prevention and risk-centered intervention. Our CSP presents a common vision and a commitment to take steps to meet the challenges for community safety and to improve both safety and the feeling of safety in our communities.

**You can consult the Community Safety Plan on our website under the "Public Safety" tab.**



## About: KIDSPORT KENT REGION



KidSport – Kent Region offers grants to children from families facing financial obstacles to help them to cover the costs of registration fees so that all children 18 and under may play a sport for a season. Grants can be up to \$400 per eligible child per year.

**The next deadlines are May 1 and September 1, 2023.**



## How do I apply for a grant?

### 1

#### Make sure you have all the information requested:

- CRA notice of assessment for the last taxation year;
- Last three pay stubs;
- Information on exceptional circumstances.

### 2

#### Fill out the form online

(<https://kidsportcanada.ca/new-brunswick/kent-count/apply-for-a-grant/>)

#### or on paper

(<https://kidsportcanada.ca/wp-content/uploads/sites/191/KidSport-EN-Fillable-4.pdf>)

#### Paper applications may be mailed to:

KidSport Kent County  
178 Water Street  
Miramichi, NB  
E1N 1B6

## NEED HELP?

Each municipality in the region has identified a contact person who can help you to fill in the application.

### Nouvelle-Arcadie

Manon Vautour - Community and Cultural Agent  
506-775-2080 acc@rogersvillenb.ca

### Beaurivage

Julie Vautour - Community Agent  
506-523-7870 j.vautour@beaurivage.org

### Five Rivers

Connor Woods - Recreation and Community Relations Coordinator  
506-523-6921 cwoods@5-rivers.ca

### Champdoré

Joël Goguen - Community Agent  
506-525-4022 joel.goguen@champdorenb.ca

### Grand-Bouctouche

Sébastien Doiron - Community Agent  
506-743-7000 sebastien.doiron@bouctouche.ca

### Beausoleil

Mathieu Caissie - CAO and Clerk  
506-576-2202 mathieu.g.caissie@mairie-beausoleil.ca

## The Kent Regional Service Commission is also there to help you

### Stéphanie Caissie

Coordinator, Social Inclusion and Community Development  
Kent Regional Service Commission  
506-523-1857 stephanie.caissie@csrk.ca

### Claudie Ringuette

Coordinator, Recreation Planning  
Kent Regional Service Commission  
506-743-1490 claudie.ringuette@csrk.ca

## KENT TRAIL GUIDE



## Have fun outdoors when you visit one of the non-motorized trails in our region!

You can get a paper copy of the Kent Trail Guide at one of our two points of service:

### Grand-Bouctouche

104 Irving Boulevard, Unit 1  
Bouctouche, NB  
E4S 3L5

### Beaurivage

25 Cartier Boulevard, Unit 145  
Richibucto, NB  
E4W 3W7

**You can also consult the electronic and printable version by visiting the site: <https://www.krsc.ca/fr/loisirs/>**



# HOUSING

The Kent region is currently facing challenges with housing. A lack of available housing units and the difficulty of finding affordable housing are a few of the problems experienced by many of our citizens.

In recognition of these challenges, a study of the housing demand was carried out recently for the whole Kent region. The study results will guide approaches by KRSC and its partners to find possible housing solutions. The report is available on our website.

In the meantime, the province of New Brunswick (GNB) offers the following resources as a form of housing support:

## Website

The website **“Housing in New Brunswick – Information for living here”** has information and services on the following subjects:

- Social and supported housing
- Homelessness
- Review of rental housing landscape in New Brunswick
- Developers
- Information for tenants and future owners

To access the website, visit:  
<https://www2.gnb.ca/content/gnb/en/corporate/promo/housing.html>

## Housing Navigators

A free service to help people obtain assistance with housing. You can speak to a housing navigator from 9:00 a.m. to 5:00 p.m., Monday to Friday, at 1-833-355-3262.

A housing navigator can help you to:

- get general information on housing and housing programs;
- find out how to obtain services and support measures for tenants, owners and developers;
- obtain information on assistance for residents in meeting their basic needs and overcoming the challenges they face related to housing.



## NEED TO GET AROUND?

**Did you know that the KRSC provides transportation services?**

**Thanks to our volunteers, we provide safe, reliable and affordable transportation to services such as:**

- Medical appointments
- Grocery stores
- Community and government programs
- Pharmacy (medications)
- Financial services (banks, taxes, etc.)
- Other



## Volunteer

If you have a vehicle and want to support your community, a few hours of your time can make all the difference. Here's what we're proposing:

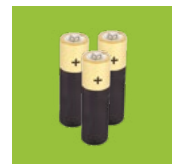
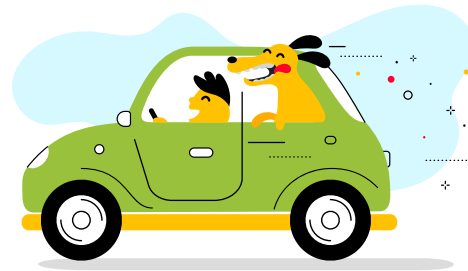
- Flexible volunteer schedule
- Reimbursement for kilometres driven
- Training
- And lots more.

**If you or someone you know needs help to get around, or you want information on becoming a volunteer, find the details on [csr.k.ca](http://csr.k.ca) or dial 506-523-1239.**

## FREE drive-through service for RESIDENTIAL WASTE disposal

### WE ACCEPT THE FOLLOWING ITEMS:

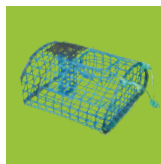
Maximum quantity equivalent to a half-ton truck or utility trailer load.  
*Residents are asked to sort their load by type of material to facilitate unloading.*



Household  
hazardous  
waste



Glass and cardboard  
(this material will be  
recycled)



Marine debris  
(limit of 5 traps  
and 10 buoys per  
resident)



Appliances  
and furniture



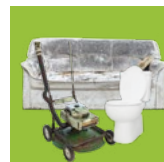
Construction and  
demolition waste  
(make sure it's easy  
and safe to transport)



Tires  
(limit of 8 per  
resident)



Ash



And more!

### The following items are not accepted:



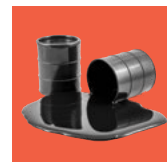
Automotive parts  
(except tires)



Unsorted waste



Regular waste eligible  
for roadside pick-up  
(blue, green  
and clear bags)



Commercial waste

## BULKY WASTE (Large Items)

### A new way to pick up your bulky waste

Since April 2023, the bulky waste collection service permits users to call for more frequent collections, in order to provide more consistent service:



Register for service –  
by telephone or on  
our website



Each residence can  
have up to eight (8)  
pick-ups a year



Limit of six (6)  
large items at a time  
(up to 48 a year)

**Plus besoin d'attendre.  
Inscrivez-vous dès que vous avez un gros article à jeter!**

### Regulations

- ✓ Collection of bulky waste, not large quantities of waste
- ✓ Small quantities of wood and other construction materials will be accepted if packaged into bundles measuring 4 x 2 x 2 ft. (1.2 x 0.6 x 0.6 m) and not weighing over 50 lb. (23 kg).
- ✗ No black or opaque bags
- ✗ No waste in trailers or truck boxes
- ✗ No hazardous waste, auto parts or commercial waste



**REMEMBER YOU HAVE TO BE REGISTERED  
TO HAVE US COLLECT WASTE FROM YOU!!!**

**The format will be different in 2023, but the on-site quality of service offered will be the same! Here is where and when the Eco-Depot will be in 2023:**

April 29th (Sat)	<b>Saint-Antoine</b>	9 AM to 4 PM	Community Centre / 4556 Principale Street
May 3rd (Wed) & 4th (Thurs)	<b>Shediac</b>	noon to 8 PM	Festival Arena / 84 Festival Street
July 12th (Wed) & 13th (Thurs)	<b>Rogersville</b>	noon to 8 PM	Arena / 18 des Ormes Street
August 2nd (Wed) & 3rd (Thurs)	<b>Shediac</b>	noon to 8 PM	Festival Arena / 84 Festival Street
December 6th (Wed) & 7th (Thurs)	<b>Bouctouche</b>	noon to 8 PM	JK Irving Centre / 30 Evangeline Street





Download the

# KENT SERVICES

mobile app for information that applies directly to your address

- Garbage collection schedule
- Sorting guide
- Collection interruption or change alerts
- Special event alerts (bulky waste collection, Eco-Depots, Public Safety Days, etc.)
- 72-hour preparedness reminders
- Notification of emergency measures (detours, opening of warming centres, etc.)

**KENT SERVICES**

Download on the App Store

GET IT ON Google Play

Visit our website at **WWW.KRSC.CA**

The site contains a full list of KSRC programs, as well as various tools and resources.

### Keep in touch...

**Bouctouche**  
**506-743-1490**  
 104 Irving Boulevard, Unit 1  
 Bouctouche, NB E4S 3L5

**Richibucto**  
**506-523-1820**  
 25 Cartier Boulevard, Unit 145  
 Richibucto, NB E4W 3W7

Toll-free  
**1-855-588-1125**

**@Kentsrc**

