

Commission de services  
régionaux de Kent



Kent Regional  
Service Commission

# LET'S TALK KENT!



## General Services

1

Action Canada  
Board Meetings  
Vitalité

## Planning Departement

3

Zoning Process

## Community Development

4

Overcoming Poverty Plan  
Kent Gardens Network

## Transport Kent

7

Wheelchair Accessible Van

## Public Safety

8

Voyent Alert

## Tourism

9

Hub City Foodies

## Economic Development

9

Entrepreneurship Gala

## Solid Waste

10

Bulky Waste  
Why Wait?  
Your Trash in the Winter  
Safe Waste

## Contacts

13

Volume 15 - fall 2024

KRSC.CA



The Board of Directors (Board) and the staff of the Kent Regional Service Commission (KRSC) are pleased to present the fall 2024 newsletter. This newsletter is designed to provide you with informative updates, useful information, and exciting news about the work and activities of the KRSC. We hope you find it as enjoyable to read as we found it to create.



## Action Canada

The Board of Directors and staff of KRSC wish to congratulate Isabelle Godin, one of their employees, on being chosen a Fellow of the 2024-25 class of Action Canada, a national program. Isabelle joins 16 other emerging public service leaders for a year of research, learning and personal and professional development. During the year, she will learn more about policy development, how our wonderful country operates and leadership. Hearty congratulations, Isabelle, and we hope that you will be able to profit fully from this superb adventure!



**For more about Action Canada:**

<https://actioncanada.ca/>

## Meeting of the Board

KRSC Board meetings are open to the public. They are scheduled for the third Thursday of each month and are announced one week in advance on our website home page.

The Board invites the public to its upcoming fall meetings on October 24, November 21 and December 19. They are held in the KRSC offices in Beaurivage (25 Cartier Boulevard, Unit 145 in Richibucto) and start at 4:00 p.m.

*Simultaneous interpretation services are provided.*



# Planning a Healthy Future: Stella-Maris-de-Kent Hospital Master Plan Under Study

Efforts are ongoing to provide quality care in Kent Region. Representatives of the Vitalité Health Network, members of the Elsipogtog First Nation, the Kent Regional Service Commission’s Health Committee and the firm CIM Conseil met as part of preparing a master plan for the Stella-Maris-de-Kent Hospital.

During this cyclic visit, which was aimed at better serving the public, the team explored the Hospital’s facilities and spoke to managers at the establishment about possible improvements. They also identified local needs with the Committee, members of the community and the Elsipogtog First Nation and newcomers. Other dialogues with the Indian Island, Bouctouche and Fort Folly First Nation communities are scheduled for late August.

The master plan is a long-term strategic planning initiative based on demographic projections, activity volumes and the needs of the community, and formulates recommendations on infrastructure to meet future needs. The recommendations from the final report presented in autumn 2024 will be integrated into the New Brunswick government’s facility planning process to determine what funding will be granted.





# What is the rezoning process?

1

The rezoning process starts with a meeting with an urban planner to discuss the project and gather the information needed.

2

The applicant then submits a zoning amendment request by letter to the Municipal Council.

3

The Council, if it determines the application to be admissible, must ask the opinion of KRSC (Regional Service Commission), which writes a report after performing the needed investigations.

4

The application is then examined by the Planning Advisory Committee which is mandated to provide a recommendation to the Municipal Council.

5

The Council then makes a final decision to accept or reject the application. If the amendment is approved, its adopting and registering process may take from four to six months, with the possibility of additional delays if the municipal plan has to be amended.

6

This process is public and allows residents to express themselves and submit their support or objections. You are strongly advised to present your application in the fall for construction projects planned for the following spring.

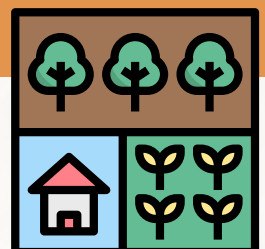
7

A rezoning application requires a detailed site plan, building plans and illustrations, with additional information such as drainage and exterior materials, to guarantee project success and transparency.

8

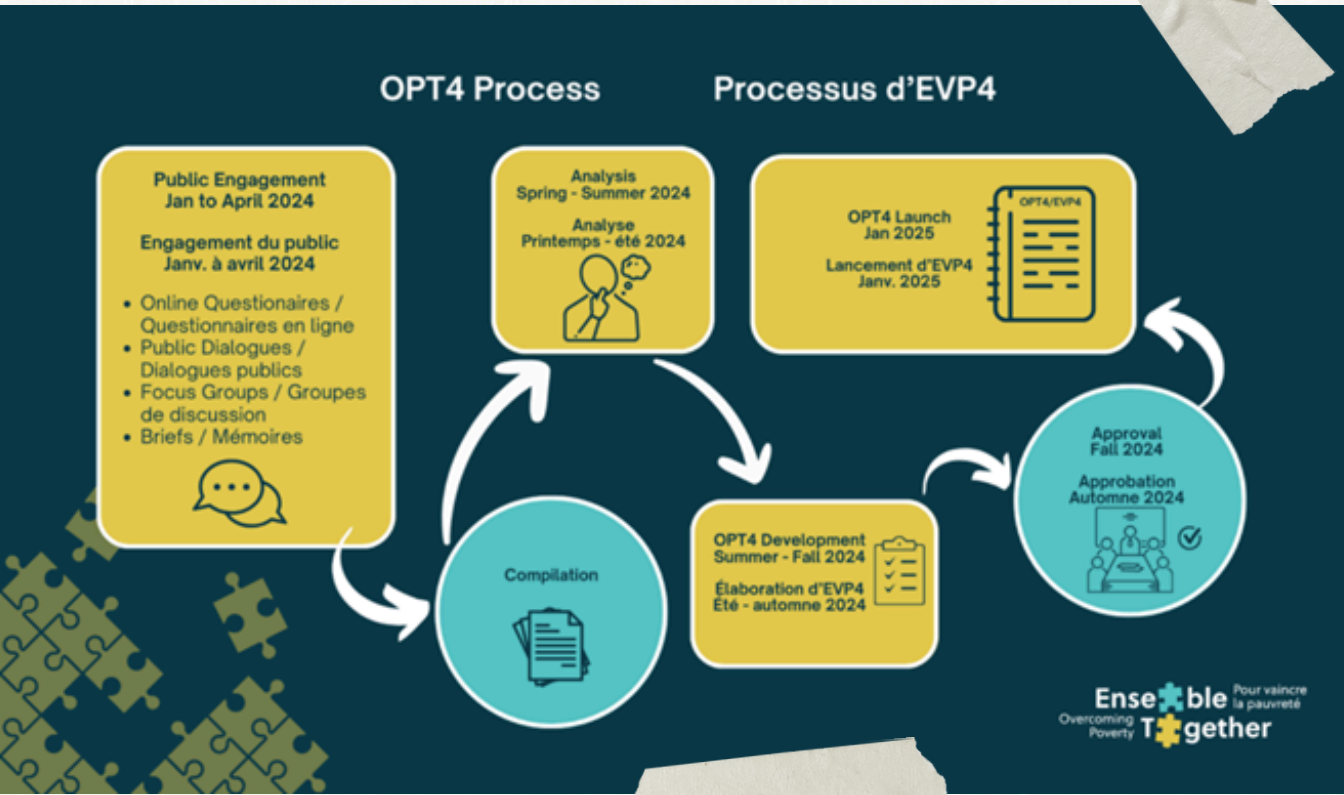
Documents should be digital and made to an appropriate scale to be shared with authorities and the community.

If you have any questions or need assistance throughout the process, please do not hesitate to contact the KRSC at **506-523-1820**.





# Renewal of the Provincial Overcoming Poverty Together Plan



- **Overcoming Poverty Together** is the economic and social inclusion plan that is required to be renewed every five years (under New Brunswick legislation).
- The plan aims to improve the financial situation and wellbeing (social situation) of all persons living in New Brunswick.
- The public engagement process began in January 2024 and ended on April 30, 2024.



## Next Steps :

The Economic and Social Inclusion Corporation (ESIC) is presently compiling and analyzing data compilation and preparing the plan.

**We are sincerely grateful for all our citizens and partners who participated in the renewal process by:**

- answering the online questionnaire;
- presenting a brief;
- contributing to community dialogues and discussion groups in our region.

***Your comments will guide the preparation of the next Economic and Social Inclusion plan.***



For more information on the renewal of **Overcoming Poverty Together**, visit [\*\*www.nbtogether.ca\*\*](http://www.nbtogether.ca).

To contact the Economic and Social Inclusion Corporation (ESIC) directly, telephone 1-888-295-4545 or email [\*\*esic-sies@gnb.ca\*\*](mailto:esic-sies@gnb.ca).





# KENT Gardens Network

Local food resilience stars! Here are the year's food projects up to now!



Looking for tips and tricks to grow your own food and save money? Follow the KENT Gardens Network Facebook Page and follow Monsieur Carotte's education YouTube Channel to help you grow food, make preserves and enjoy the benefits of a rural Kent County lifestyle:

[www.youtube.com/@monsieurcarotte72](https://www.youtube.com/@monsieurcarotte72)





# WHEELCHAIR ACCESSIBLE VAN



Transport Kent offers safe and reliable transportation to essential services and necessities at a reasonable cost. **To expand and improve the service, a mobility vehicle has been added to cater to the needs of a wider population.**

## The service can be used for:

- Medical Appointments
- Groceries
- Community and government programs
- Pharmacy (medications)
- Financial services (banks, taxes, etc.)
- Other

**THE RATE FOR TRANSPORTATION  
IS \$0.25/KM**

**TRANSPORTATION RESERVATIONS  
MUST BE MADE AT LEAST 2  
BUSINESS DAYS IN ADVANCE.**



**Meet the driver,  
Marc!**



## Become a Volunteer Driver with Transport Kent

If you have a vehicle and want to support your community, a few hours of your time can make a difference! Give us a call today for more information.

**Contact Us**

**506-743-1490** 

[krsc.ca/transport/](https://krsc.ca/transport/) 





The KRSC along with the municipalities of Beaurivage, Champdoré, Five Rivers, Beausoleil and Grand Bouctouche have selected Voyent Alert! as their new communication service provider. Voyent Alert! is a versatile communication service used to send alerts to residents, businesses, and visitors during critical events such as fires or floods, as well as for important day-to-day communications like municipal maintenance and public events.

To receive important notifications, register online or through the Voyent Alert! app and choose their preferred notification method, such as text message, voice message, or email, as well as their location. The system utilizes smart alert capabilities to ensure that users only receive notifications that are relevant to them.

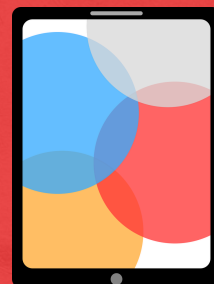


# CONTEST ALERT!

Want to win an **iPad**, a **JBL speaker**, or a **72-hour preparedness kit**? Register with Voyent Alert! today for a chance to win! The random draw will take place on November 1st.



iPad



JBL Speaker



# Hub City Foodies

Tourism

The KRSC and Destination South-East have collaborated with Hub City Foodies over the summer to showcase and celebrate the delectable local cuisine of the Kent Region. Together, they aimed to discover and honour the finest lobster roll and fried clams that the region has to offer.



*Entrepreneurial Gala -  
Save the date!*

**Economic  
Development**

The Kent-South, Kent-North, Kent-Centre, Greater Rogersville Chamber of Commerce and the KSRC are happy to announce the return of the prestigious annual Kent Entrepreneurial Gala. This event will take place on November 2, 2024, in the Guy A. Richard Hall at the J.K. Irving Center in Grand-Bouctouche. Awards will be given to the Business of the Year, Emerging Business, Young Entrepreneur, and Tourism. If you have any questions, **call Micheline Léger at 506-743-3144 or email her at [micheline.leger@csrkc.ca](mailto:micheline.leger@csrkc.ca)**



# BULKY WASTE

## Service by Registration

- Register **BEFORE** placing your bulky waste at the side of the road.
- Once registered (online or by phone) you will receive a collection date for these items.
- Be a good neighbour, only put your items out the weekend before the date indicated.
- Garbage collectors have all week to complete the collection.
- We collect up to six (6) large items at a time.

**DON'T WAIT, REGISTER AS SOON  
AS YOU HAVE A FEW ITEMS TO  
THROW AWAY!!**



## HOW DO I REGISTER?



**Scan me to  
register  
online!**

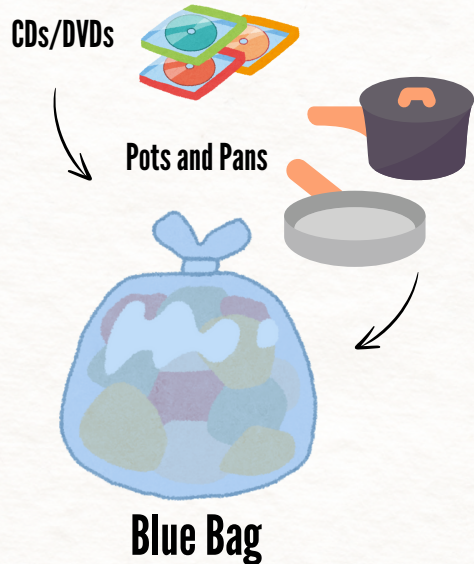
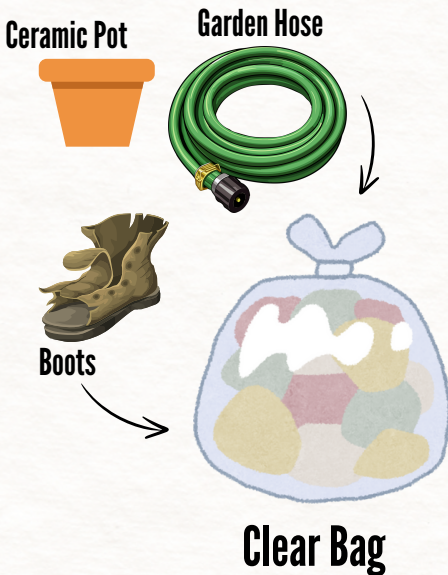
You can register **online**  
by filling out our simple  
form or give us a call at  
**506-743-1490**

**WWW.KRSC.CA/SOLID-  
WASTE/#BULKY**



# Why wait?

**Why wait for bulky waste collection?** If your item fits in a garbage bag, it can go curbside! For example, DVDs, garden hoses, flowerpots, boots, and pots and pans can all fit in your clear or blue garbage bag. Make sure to follow the 3-stream recycling system!



## Your Trash in the WINTER ❄️

**Make sure your trash is never missed during the winter months by following these tips:**

- Put your bags out before 4:00.
- Put your trash on the left side of your driveway (yard) as you face your house so that it is clearly visible.
- Your bags and bins should be less than 3 m (10 ft) from the road.
- They should be easily accessible and clear of snow and ice.
- Don't put your bags and bins on a snowbank.
- Make sure that your bins and bags are clearly visible from the road and no more than 3 m (10 ft) from the side of the road.





# Safe Waste

Your trash goes through several sets of hands during collection and sorting. **Help us protect them!**



## Your bags:

- Should be tied.
- Should be easy to access.
- Should be the right colour and placed together, as much as possible.



## Your bins:

- Should be free from pests (wasps, mice, raccoons, etc.)
- Shouldn't be too deep (easy access to bags in the bottom)
- You should remove snow and ice from on and around your bins.



## Sharp Items:

- Items such as broken glass or knives should be wrapped in paper or put into a container before being placed in your bags.

## Never throw the following out with your ordinary trash:

- Needles
- Animal carcasses
- Propane tanks
- Compact fluorescent lightbulbs
- Paint
- Batteries
- Chemicals



visit our website:  
**WWW.KRSC.CA** 

The site contains a full list of KRSC programs, as well as various resources and tools.



**Contact us...**



**Bouctouche**

104 Irving Blvd, Unit 1  
Bouctouche, NB E4S 3L5  
506-743-1490



**Richibucto**

25 Cartier Blvd, Unit 145  
Richibucto, NB E4W 3W7  
506-523-1820

**Toll-free:**

**1-855-588-1123**



Download the  
**KENT SERVICES**  
mobile app for information that applies  
directly to your address

- Garbage collection schedule
- Sorting guide
- Collection interruption or change alerts
- Special event alerts (bulky waste collection, Eco-Depots, Public Safety Days, etc.)
- 72-hour preparedness reminders
- Notification of emergency measures (detours, opening of warming centres, etc.)

**KENT  
SERVICES**

